

ANNUAL REPORT
CANADIAN GENERAL
ELECTRIC Co.
LIMITED
1912



FURVIS HALL
LIBRARIES

JAN 9 1946

MCGILL UNIVERSITY

Canadian General Electric Company
Limited

ANNUAL REPORT *of the*
BOARD OF DIRECTORS

FOR THE YEAR ENDED
31st DECEMBER
1912

Canadian General Electric Company, Limited

GENERAL OFFICES

COR. KING AND SIMCOE STREETS, TORONTO, ONT.

DISTRICT OFFICES

MONTREAL, QUE.	HALIFAX, N.S.	OTTAWA, ONT.
COBALT, ONT.	SOUTH PORCUPINE, ONT.	
WINNIPEG, MAN.	REGINA, ASSA.	SASKATOON, SASK.
CALGARY, ALTA.	EDMONTON, ALTA.	NELSON, B.C.
VANCOUVER, B.C.	VICTORIA, B.C.	PRINCE RUPERT, B.C.

FACTORIES

CANADIAN GENERAL ELECTRIC CO., LIMITED

PETERBORO, ONT. TORONTO, ONT.

TUNGSTEN AND CARBON LAMP WORKS

TORONTO, ONT. PETERBORO, ONT. MONTREAL, QUE.

CANADA FOUNDRY CO., LIMITED

TORONTO, ONT. BRIDGEBURG, ONT.

ARCHITECTURAL BRONZE AND IRON WORKS

TORONTO.

Canadian General Electric Company, Limited

DIRECTORS

W. R. BROCK, *Hon. President and Chairman of the Board.*

FREDERIC NICHOLLS, *President.*

W. D. MATTHEWS, *Vice-President.*

HON. J. K. KERR, K.C., *Vice-President.*

SIR WM. MORTIMER CLARK, LL.D., K.C.

HON. GEO. A. COX.

HON. ROBERT JAFFRAY.

A. E. DYMENT.

SIR WILLIAM MACKENZIE.

SIR RODOLPHE FORGET.

F. GORDON OSLER.

HERBERT S. HOLT.

JAMES ROSS.

SECRETARY

and Assistant General Manager.

J. J. ASHWORTH.

SOLICITORS

KERR, DAVIDSON, PATERSON & MCFARLAND.

BANKERS

THE BANK OF MONTREAL.

THE CANADIAN BANK OF COMMERCE.

STOCK-TRANSFER AGENTS

NATIONAL TRUST CO., TORONTO.

NATIONAL TRUST CO., MONTREAL.

CANADIAN BANK OF COMMERCE, LONDON, ENGLAND.

CANADIAN GENERAL ELECTRIC CO., LIMITED

AND SUBSIDIARY COMPANIES

CONSOLIDATED BALANCE SHEET, 31ST DECEMBER, 1912

ASSETS	
CAPITAL ASSETS—	
Real Estate, Buildings, etc., at Toronto, Peterboro, Bridgeburg, Montreal, Branch Offices, Power Plant at Nassau, and Canadian Sunbeam Lamp Company, Limited.....	\$4,884,018.36
Machinery and Tools.....	2,542,368.19
Patterns and Drawings.....	565,126.73
Patents and Contracts.....	503,761.42
Total Capital Assets.....	\$8,495,274.70
CURRENT ASSETS—	
Inventory of Raw Material, Supplies, Work in Progress and Finished Materials, including expenditures on Contracts (less collections on account).....	\$5,515,768.31
Accounts Receivable (less reserve for doubtful debts).....	3,766,750.32
Investments.....	233,119.00
Notes Receivable.....	54,627.98
Cash.....	74,562.57
Total Current Assets.....	9,644,828.18
DEFERRED CHARGES.....	25,440.67
Total Assets.....	\$18,165,543.55

LIABILITIES	
CAPITAL LIABILITIES—	
Capital Stock, Common.....	\$8,000,000.00
Capital Stock, Preferred.....	2,000,000.00
Total Capital Stock.....	\$10,000,000.00
Mortgage Obligations on properties purchased.....	510,567.63
BONDS—	
Six per cent. Twenty Year First Mortgage Gold Bonds, Canadian Sunbeam Lamp Company, Limited.....	395,000.00
Total Capital Liabilities.....	\$10,905,567.63
CURRENT LIABILITIES—	
Bank Advances.....	\$1,653,744.07
Accounts Payable.....	1,449,855.41
Total Current Liabilities.....	3,103,599.48
RESERVE FOR DEPRECIATION.....	1,104,453.86
SURPLUS, per Account Annexed—	
Reserve.....	\$2,369,531.95
Profit and Loss Balance.....	682,390.63
Total Surplus.....	3,051,922.58
(Contingent Liability on Notes Receivable Discounted \$292,000.00)	—
Total Liabilities.....	\$18,165,543.55

We have audited the above Balance Sheet, and certify that it is properly drawn up, and in our opinion shows the true financial position of the Company, on 31st December, 1912.

PRICE, WATERHOUSE & CO.,
Chartered Accountants.

LYNDHURST OGDEN,
Auditor.

CONSOLIDATED SURPLUS ACCOUNT

Profit for the year ended 31st December, 1912, before providing for Depreciation and Interest on borrowed capital.....		\$2,011,719.83
Less—		
Reserved for Depreciation of Buildings, Machinery and Patterns, etc.....	\$456,358.59	
Interest.....	158,878.16	
		615,236.75
Net Profit for the Year.....		\$1,396,483.08
Less—Dividends and Common Stock Bonus Paid.....		689,871.80
Surplus for the Year.....		\$ 706,611.28
Add—		
Undivided Profits as at 31st December, 1911.....		675,779.35
		\$1,382,390.63
Deduct—		
Amount transferred to Reserve.....		700,000.00
Balance at Credit of Profit and Loss Account.....		\$ 682,390.63
Reserve, after including the above amount of \$700,000.00.....		2,369,531.95
Surplus per Balance Sheet.....		\$3,051,922.58

Certificate of Chartered Accountants.

MONTREAL.
TORONTO.
WINNIPEG.
VANCOUVER.

LONDON.
MEXICO.
BUENOS AYRES.

CABLE ADDRESS "PRICEWATER" TORONTO.

Price, Waterhouse & Co.

CHARTERED ACCOUNTANTS IN ENGLAND AND WALES.

NEW YORK.
CHICAGO.
PHILADELPHIA.
BOSTON.
ST. LOUIS.
PITTSBURGH
SAN FRANCISCO.
LOS ANGELES.
SEATTLE.

JARVIS BUILDING,
TORONTO, March 8th, 1913.

TO THE SHAREHOLDERS OF THE CANADIAN GENERAL ELECTRIC
COMPANY, LIMITED.

We have examined the books and accounts of the Canadian General Electric Company, Limited, and of its subsidiary Companies, for the year 1912, and find that the annexed Consolidated Balance Sheet and Surplus Account are correctly prepared therefrom.

During the year there have been charged to Capital Accounts only expenditures in respect of actual additions, extensions or permanent improvements. Sufficient provision has been made for Depreciation of Plant and Equipment.

The Inventories of Raw Material, Supplies, Work in Progress and Manufactured Products have been taken and certified by responsible officials of the Company, and have been compared by us with the factory records. The valuations have been accurately made at or below cost price, sufficient allowance being made in respect of goods that are either obsolete or not readily saleable.

Reserves have been made for Doubtful Accounts and Notes Receivable and for all ascertainable liabilities.

We have verified the Cash, the Investments and the Bank Balances by actual inspection or by properly certified statements.

WE CERTIFY that the annexed Balance Sheet is properly drawn up so as to show the true position of the Company at December 31st, 1912, and that the Surplus Account shows the correct result of the operations for the year.

PRICE, WATERHOUSE & CO.

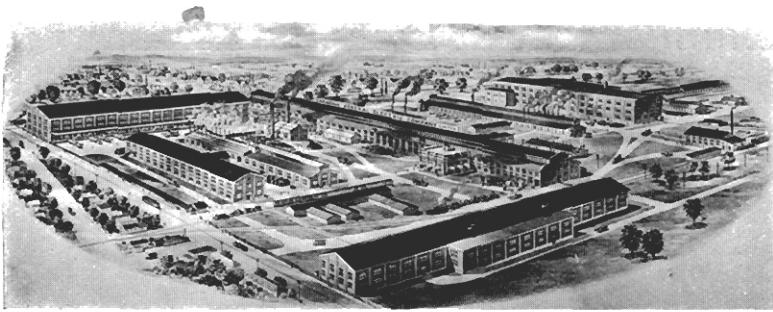


ELECTRIC PORCELAIN WORKS, PETERBOROUGH, ONT.

DIVIDENDS

The following table sets forth the Dividends that have been paid since 1893:

1893	6%	\$ 85,641.41
1894	6%	87,768.53
1895	6%	87,982.29
1897	6%	71,330.57
1898	8%	81,000.00
1899	10%	108,000.00
1900	10%	127,623.07
1901	10%	166,750.00
1902	10%	213,739.22
1903	10%	269,277.98
1904	10%	284,890.00
1905	10%	335,499.11
1906	10%	484,690.14
1907	10%	488,000.00
1908	7%	439,042.30
1909	7%	469,000.00
1910	7%	494,624.83
1911	7%	525,109.37
1912	7% and 1% Bonus	689,871.80
Total		<u>\$5,509,840.62</u>



MAIN ELECTRICAL WORKS, PETERBOROUGH, ONT.

Annual Report of the Directors

TO BE SUBMITTED TO THE SHAREHOLDERS AT THE ANNUAL
GENERAL MEETING OF THE COMPANY IN TORONTO,
ON TUESDAY, 25TH MARCH, 1913.

Your Directors submit herewith the Balance Sheet of the Company as upon the 31st day of December, 1912, also statement of Profit and Loss for the year, and Certificate of Messrs. Price, Waterhouse & Company, Chartered Accountants.

The year 1912 has been a period of marked expansion, with *undisturbed prosperity and steady development*, in every part of the Dominion. Your Company, as evidenced by the Report presented, has participated to the full extent in this increased business, and it is with *pleasure that your Directors are able to present a statement showing that the Profits for the year 1912 amounted to \$2,011,719.83.*

From this amount has been written off for depreciation the sum of \$456,358.59, and for interest on borrowed capital the sum of \$158,878.16, leaving a balance of \$1,396,483.08. Deducting from this amount Dividends on Preference and Common Stock, at the rate of 7% per annum, and a Bonus of 1% on the Common Stock, amounting in all to \$689,871.80, there remains a net balance of \$706,611.28, of which \$700,000.00 has been added to the Reserve Fund, which now stands at \$2,369,531.95. The total of the Reserve Fund added to the balance carried at the credit of Profit and Loss makes a total Surplus of \$3,051,922.58, equal to 30.51% of the par value of the share Capital of the Company, both Common and Preference.



CANADA FOUNDRY CO., DAVENPORT WORKS

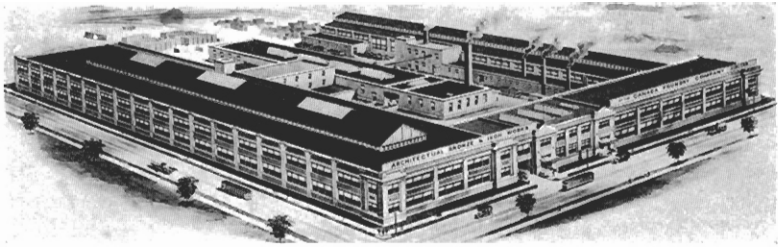
In addition to the Surplus as shown, the value of the Real Estate owned by the Company is greatly in excess of the cost value as it appears on our books.

There is also a Reserve for Depreciation, now amounting to \$1,104,453.86.

During the year important additions have been made to the Company's buildings and plants. At the Peterborough Works a new manufacturing and stores building, 327 feet by 80 feet by three stories, has been erected; a new Office and Warehouse building has been erected in Montreal; a new and complete manufacturing plant has been erected in Toronto for our Architectural Bronze and Iron Works; an addition 100 feet by 62 feet by three stories to the Sunbeam Incandescent Lamp Factory, also in Toronto, has been completed; and an Office and Warehouse building has been erected in Porcupine. Your Directors are pleased to state that the funds required for the greater proportion of the expenditure for real estate, buildings, machinery, and plant, has been provided out of the surplus earnings of the year.

A reference to the Balance Sheet shows that our total Cash and Current Assets amount to over nine million dollars, of which amount over five and one-half million dollars is carried in our Inventory. It should be understood in considering this Asset that it includes the materials for all orders and contracts on hand which were not completed and shipped at the end of the year. Following the usual policy of the Company, this Inventory has been taken at cost price, or the market price, whichever was the lower, plus the actual cost of labor expended on the contracts, and no estimated profit has been taken into account.

Uncompleted Contracts, to the value of about seven million dollars, in various stages of completion, have been carried over to the current year.



ARCHITECTURAL BRONZE AND IRON WORKS, TORONTO, ONT.

In order that our Shareholders may have some idea of the extent of the several manufacturing plants owned and operated by the Company, photo engravings are inset on the pages of this Report.

The Company owns the real estate and buildings occupied as District Offices and Warehouses in Halifax, N.S.; Montreal, P.Q.; Toronto, Ont. (Head Office); Porcupine, Ont.; Winnipeg, Man.; and Vancouver, B.C., and plans are being prepared for a building in Calgary, Alta., suitable for the Company's requirements. The remaining Branches, or District Offices, are in rented premises, and are located in,—Ottawa, Ont.; Cobalt,* Ont.; Regina, Sask.; Saskatoon, Sask.; Calgary, Alta.; Edmonton, Alta.; Nelson, B.C.; Victoria, B.C.; and Prince Rupert, B.C.

Your Directors desire to express their great regret at the death of Mr. H. P. Dwight, who had been a Vice-President of the Company since its inception. Mr. W. D. Matthews, a Director since the organization of the Company, was elected to the vacancy created, and on the election of Mr. Frederic Nicholls as President, the Hon. J. K. Kerr, K.C., also a Director since the organization of the Company, was elected to the Vice-Presidency vacated by Mr. Nicholls, and Mr. F. Gordon Osler was elected a Director to fill the vacancy on the Board created by the death of Mr. H. P. Dwight. Your Directors desire to express their pleasure at the acceptance of the office of Honorary President and Chairman of the Board by Mr. W. R. Brock, who had been President of the Company since its inception.

FREDERIC NICHOLLS,
President.



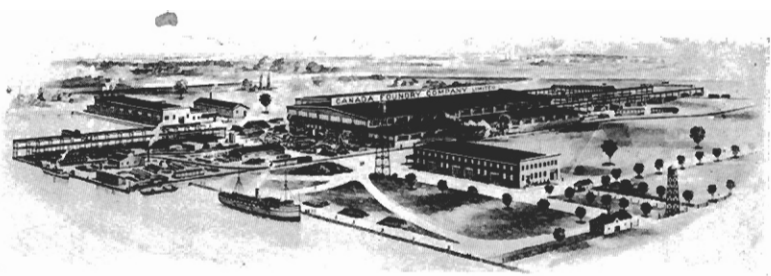
ELECTRICAL SUPPLY WORKS, TORONTO, ONT.

Canadian Securities

Canadian General Electric Company Limited

Reprinted from "The Times," London, Eng., 9th January, 1913

IN a country where water-falls abound, and where less than 10 per cent. of these magnificent sources of energy have as yet been harnessed into service, there is manifestly a wide field of operation for such an enterprise as the Canadian General Electric Company, Limited, which is engaged in the manufacture of electric plant and machinery of every description. Twenty years ago the biggest generator ever built in Canada was of 100 h.p. capacity; but it is now nothing unusual for the Canadian General Electric Company, Limited, to build even greater generators than those supplied by them in 1907 for the Electrical Development Co. at Niagara Falls, each one of which is putting out some 12,000 h.p. Similarly, transformers which were thought immense if they reached the thousand lights capacity are now being built by the C.G.E. to capacities of 50,000 lights and upwards. These are but isolated illustrations of the remarkable electrical developments that have taken place in Canada of late years. Nowhere in the world indeed has electricity made such strides in comparison with population. The manufacturing scope of the Canadian General Electric Company, Limited, is probably wider than that of any other industrial concern in the Dominion, varying in their electrical departments from the making of delicate wire filaments a thousandth of an inch thick to the building of huge 20,000 h.p. generators; or again in the works of their subsidiary, the Canada Foundry Company, Limited, at Toronto, from the smallest screws, nuts, and bolts to the largest locomotives and steam navvies.



BRIDGE WORKS, BRIDGEBURG, ONT.

THE PLANTS.

The many plants of the Canadian General Electric Company, Limited, are situated partly in Toronto and partly at Peterboro', 75 miles to the east. The location of the works at Peterboro' was largely determined by reason of the existence of a cheap supply of power drawn from the fine hydro-electric installation four miles above the town. The factories at Peterboro' occupy a fine site of about 60 acres, the equipment of which—as may be judged from the quality and magnitude of the work for which these shops are responsible—is of the highest order. The Company's products at the Peterboro' works comprise electrical generators, motors, and transformers of all types, and of the largest size hitherto designed; electric locomotives, street railway equipment, insulated wires, incandescent electric lamps, electric porcelains, and electric accessories of every kind.

The other works of the Company are established in Toronto, Montreal and Bridgeburg, the largest plant being situated at Davenport, a suburb of Toronto, where the Canada Foundry Company, Limited—of which the Canadian General Electric Company is the owner of all shares and assets—has a huge factory occupied upon every class of engineering work. The shops at the Davenport Works, extending over some 60 acres, are equipped with the most up-to-date machinery, whilst several miles of railway sidings owned by the Company enable raw materials and the finished products to be handled quickly and economically. At these works the Company is in a position to undertake the very largest engineering propositions, and has already successfully completed many important Government, Municipal, and Railroad contracts. In the foundry castings for



CARBON AND TUNGSTEN LAMP WORKS, TORONTO, ONT.

generator frames up to 30ft. in diameter are turned out for the numerous hydro-electric companies which are establishing themselves all over the Dominion. Large quantities of structural steel also come out of the Davenport shops, and many of the most important railway bridges in Canada are here designed, constructed, and afterwards erected, by the Company's engineers. The growth of this section of the Company's product has increased to such an extent as to necessitate additional manufacturing facilities, resulting in the acquisition by the Company of large engineering works at Bridgeburg, Ont., where there is now fabricated structural material for bridges, steel transmission towers and work of that nature. Locomotives of all types and for any service, passenger, freight, or for contractors' use, are also built in these shops, the output being about one per week. Steam navvies (or shovels as they are called in Canada) up to 90-ton size are a special feature of the Company's output at Davenport, whilst cranes up to 100 ton capacity, tram-cars, stone-crushers, road rollers, pumps, and air compressing machinery, furnish but a few of the every day items in the manufacturing programme of this great concern.

In the boiler construction alone the Company's output would do credit to many a business which undertakes no other class of work. In addition to horizontal, vertical, tubular, and water-tube boilers, the shops in the course of the year are responsible for a large amount of riveted steel work in the shape of water-towers, penstocks, lock-gates, flumes, stand-pipes, smoke-stacks, etc. In the Pipe Foundry, pipes of all diameters are cast on the most approved modern principles, with hemp and clay cores turned true in a lathe before lowering into the casting pits.

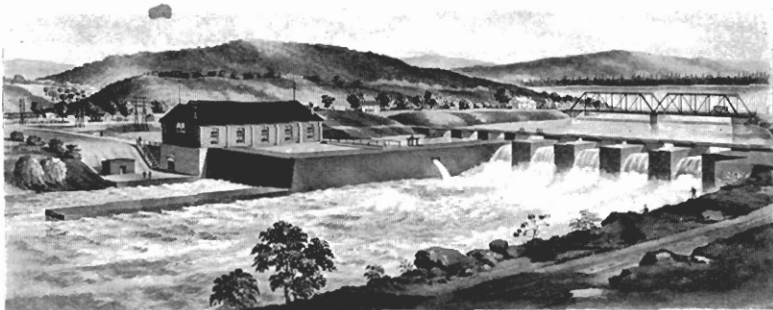


TUNGSTEN LAMP WORKS, MONTREAL, QUE.

It is impossible in the space at disposal to do more than indicate briefly as above the varied lines of *mechanical equipment and supplies* manufactured by the Canadian General Electric Company, Limited. Suffice to say that with its vast resources and comprehensive plant it is ready to undertake and carry out to a successful issue any engineering project however great and complex. As an instance of this ability to undertake the heaviest and most intricate class of work may be cited the erection of the movable dam at the St. Andrew's Rapids on the Red River, near Winnipeg. Owing to ice pressure in the Spring it was necessary to devise a dam which could be raised in Winter above the level of the main stream. This extremely difficult and novel proposition has been ingeniously and successfully carried out by the Company's engineers, all the plant being built at the Davenport works.

With its large staff of draughtsmen, engineers, and construction experts, in conjunction with its well-equipped machine shops and factories, the Company is thus not only able to manufacture but to supervise the actual erection and installation of any plant. This centralization under one organization, which shoulders the responsibility for the work as a whole, has obvious advantages which need no further comment.

In addition to the head office at Toronto, with its Sales and Engineering Departments, the Company has a number of branch offices throughout Canada—at *Halifax, Montreal, Ottawa, Cobalt, Porcupine, Winnipeg, Nelson, Victoria, Prince Rupert, Vancouver, Saskatoon, Calgary, Regina and Edmonton*—each with its own complete organization, thus enabling the Company's officers to study the local conditions and requirements, which differ considerably in the various provinces of the Dominion.



No. 1 POWER HOUSE, PETERBOROUGH, ONT.

Two other large factories in Toronto, controlled by the Company, must be mentioned. The Canadian Sunbeam Lamp Company, which employs some 400 hands, is devoted entirely to the manufacture of Tungsten filament lamps under the Mazda patents, for which the Company owns Canadian rights. Another manufacturing department operated by the Canadian General Electric Company, Limited, is the Architectural Bronze and Iron Works of the Canada Foundry Co., Limited, a spacious building which comprises machine, smithing, and pattern shops, foundry and drawing office for the design of ornamental iron and bronze work. Until recently most of the art metal and bronze metal work used in Canada was imported from abroad. The Company by introducing the highest technical skill and artistic talent, and by providing modern manufacturing facilities, has developed a very large and increasing business in this class of work. Recently some fine wrought iron gates, bronze doors, railings, tablets, and other details for banks and public buildings have been turned out by these works equal in design and workmanship to anything that has been imported from other lands.



No. 2 POWER HOUSE, PETERBOROUGH, ONT.

