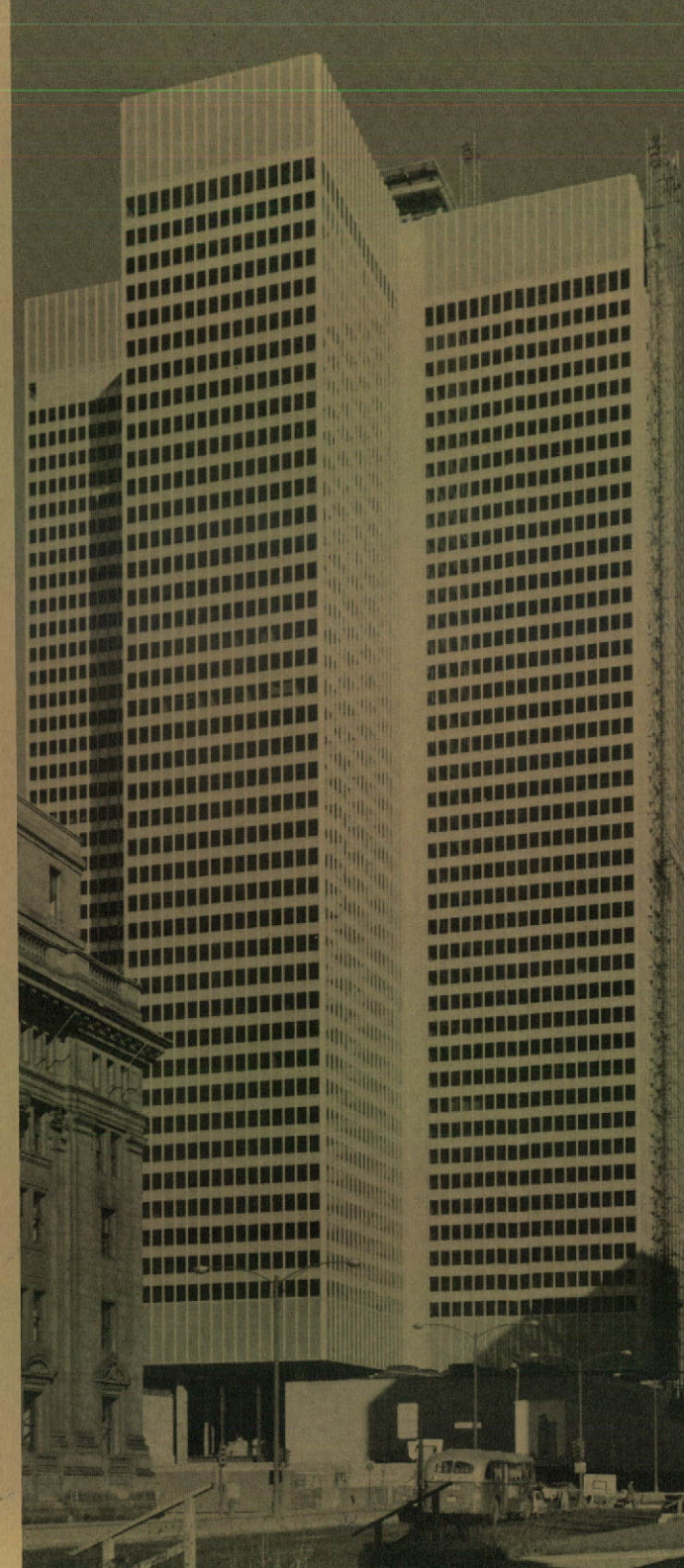
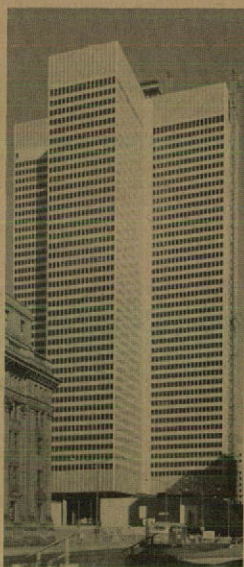


THE FOUNDATION GROUP

"HELPING CANADA BUILD AT HOME AND ABROAD"





COVER ILLUSTRATION
Place Ville Marie, Montreal

The cruciform design of the Place Ville Marie business and commercial complex has become a Canadian landmark. Constructed by Foundation, the \$100 million complex provided an impetus for the redevelopment of downtown Montreal, internationally acclaimed as a model and imaginative use of urban core space.



INTRODUCTION:

The Foundation name has been a feature of the Canadian construction scene for more than sixty years. During that period, the Foundation Group has participated in many landmark projects; projects which have not only symbolized Canada's growth into a leading industrial nation, but which in a very real sense have also made important contributions in helping to build Canada.

Throughout its history, Foundation's leadership has been earned by its ability to pioneer new developments -- by its commitment to examine and promote new techniques, to be constantly searching for new and better construction and engineering methods, and, thus, of serving its clients.

Few industries are changing more rapidly than the construction industry. Technological advances and the growing complexity of client needs have created a requirement for a new kind of organization with a much broader range of highly sophisticated and highly specialized skills and capabilities than is normally found in the traditional engineering construction company.

To comply with these trends, Foundation has moved into vertical integration of all types of construction services and is probably one of the very few completely integrated construction groups in Canada. Today, it stands alone among Canadian engineering construction organizations in the range of technical services it is able to offer to clients and in the breadth of experience it can bring to the projects it undertakes.

The services described in this brochure represent our response to the present and anticipated future needs of clients. They also represent our pride in the past traditions and achievements of the Foundation Group and our determination to play an even greater role in the future in helping Canada build.

H.F. Gautrin
President and Chief Executive Officer

One Yonge Street, Toronto, Ontario



THE HISTORICAL PERSPECTIVE

Foundation first operated in Canada in 1910 as the Canadian subsidiary of an American construction organization. Initially, its activities were confined to special foundation work -- the origin of the company name -- but very quickly diversified into other construction fields. In 1924, control of the company was purchased by a group of Canadians and since 1929, when the remaining American interest was acquired, Foundation has operated as an independent Canadian company.

As a 1962 MacLean publication article pointed out: "No single company has played a bigger role in Canadian construction than Foundation." The company, for example, handled most of the work in enlarging bridges for the double-tracking of the coast-to-coast Canadian Pacific Railway line. Recognizing the potential of the pulp and paper industry for Canada, Foundation gained expertise in this specialized type of construction at the end of World War I, and has since played a leading role in both construction and mechanical installation of major paper plants around the country. Foundation built an entire town around the paper plant at Baie Comeau, Quebec in the 1930's.

Foundation moved early into commercial building construction, erecting the 23-storey Alfred Building in Montreal in the 1920's -- at that time the most modern office building in Canada. Other well-known buildings worked on by Foundation during this period were the Chateau Laurier Hotel in Ottawa, and the T. Eaton Company downtown store in Montreal. The expertise gained in these projects stood the company in good stead for the construction of the Place Ville Marie complex in Montreal in the 1960s -- then the biggest organizing, administrative and financing job in Canadian building history.

During the 1940s, Foundation built the Shipshaw-Arvida dam and hydroelectric plant in a record breaking 18 months and was involved in the construction of the world's largest single aluminum plant at Arvida.

Foundation played an important part in the construction of the St. Lawrence Seaway in the 1950s, working on the Robert H. Saunders power project, the Iroquois Locks, the Upper Beauharnois Lock, and port installations along the river. Foundation became the first in Canada to use slipforming on such projects and also developed the temporary drydock and floating dock techniques to speed production and cut costs.

Foundation handled some of the world's largest and most difficult jobs in the Canadian North during the 1950s, building the Eastern Section of the DEW Line, extensive design and construction at Fort Churchill, and the \$100 million Inco nickel project at Thompson, Manitoba. These projects necessitated developing new techniques for dealing with perma-frost and work at extreme temperatures.

In 1953, the engineering department of Foundation was enlarged and incorporated into a separate company, Foundation of Canada Engineering Corporation Limited, to provide government and industry with complete planning, engineering and associated architectural services.

Some of Foundation's early projects involved marine engineering problems, a specialized area the company has continued to emphasize. Work in this area has included marine salvage, removal of marine obstructions -- in most cases requiring development of new engineering techniques, the rebuilding of the St. John's harbour facilities, the Arrow Dam, and construction of port facilities at most major Canadian coastal and inland ports.

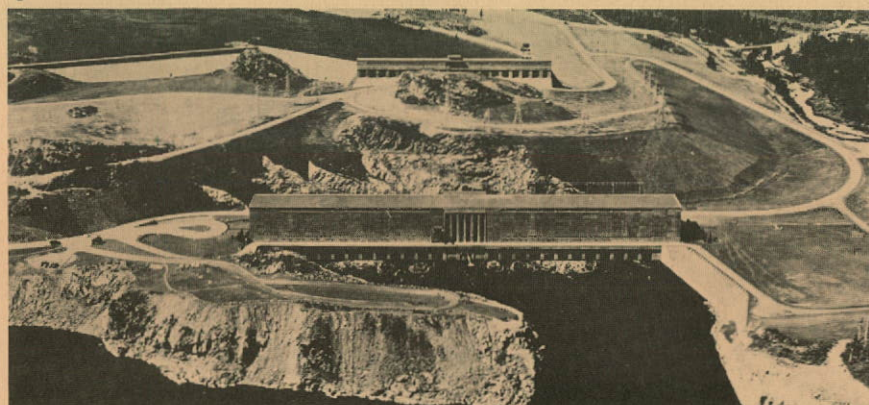
1



2



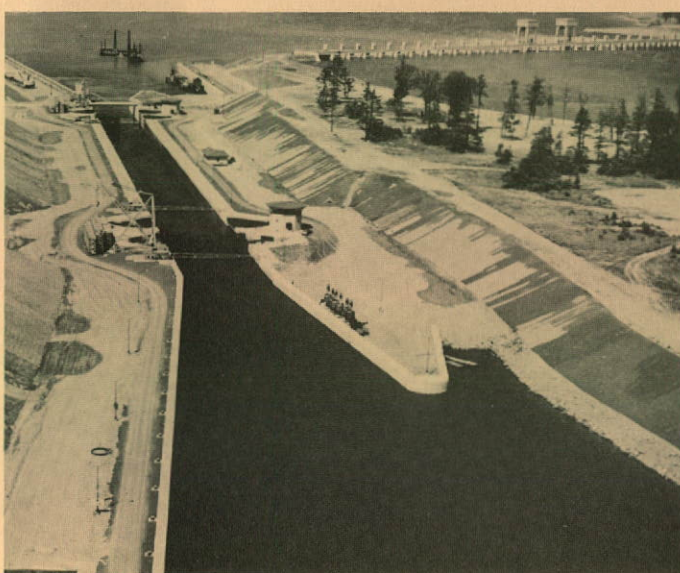
3



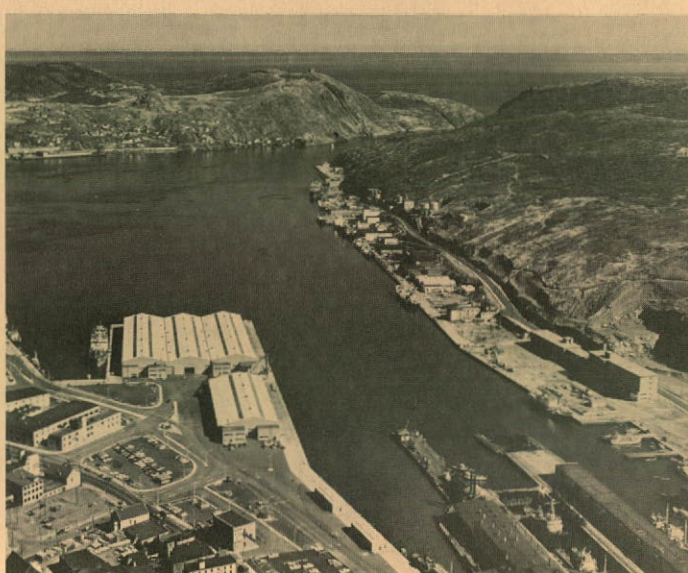
4



5



6



HIGHLIGHT FOUNDATION PROJECTS

1. Chateau Laurier extension, Ottawa
2. DEW Line Installation
3. Shipshaw Hydroelectric Installation
4. Inco plant at Thompson, Manitoba
5. The Iroquois Locks
6. St. John's Harbour, Nfld.

THE SERVICE DIMENSIONS OF FOUNDATION

SCOPE

The Foundation Group handles in excess of \$100 million of construction projects annually, with assignments ranging from small-sized projects employing conventional techniques to large-scale, multi-million dollar construction and engineering operations presenting sophisticated and complex problems.

The Foundation Group is equipped to undertake "turnkey", single responsibility projects, "design-build" assignments, and a full range of design and construction, and electrical and mechanical installation services.

Technical services and facilities of the Foundation Group cover virtually every phase of engineering and construction, with further specialization to provide specific technical and managerial expertise in each of the major construction and engineering fields.

Project and Construction Management

The increasing scale and complexity of many construction projects have created a need for modifications in the traditional approach to project management. Foundation pioneered and offers a new project management service, employing the most modern techniques of cost control and scheduling to provide the client with greater control on projects of long

duration, and greater flexibility and savings by making it possible to overlap the design and construction stages.

Civil:

Dams, tunnels, bridges, earth moving, power houses, and other concrete structures.

Marine:

Docks, wharves, piers, breakwaters, canals, port installations, removal of marine obstructions.

Industrial:

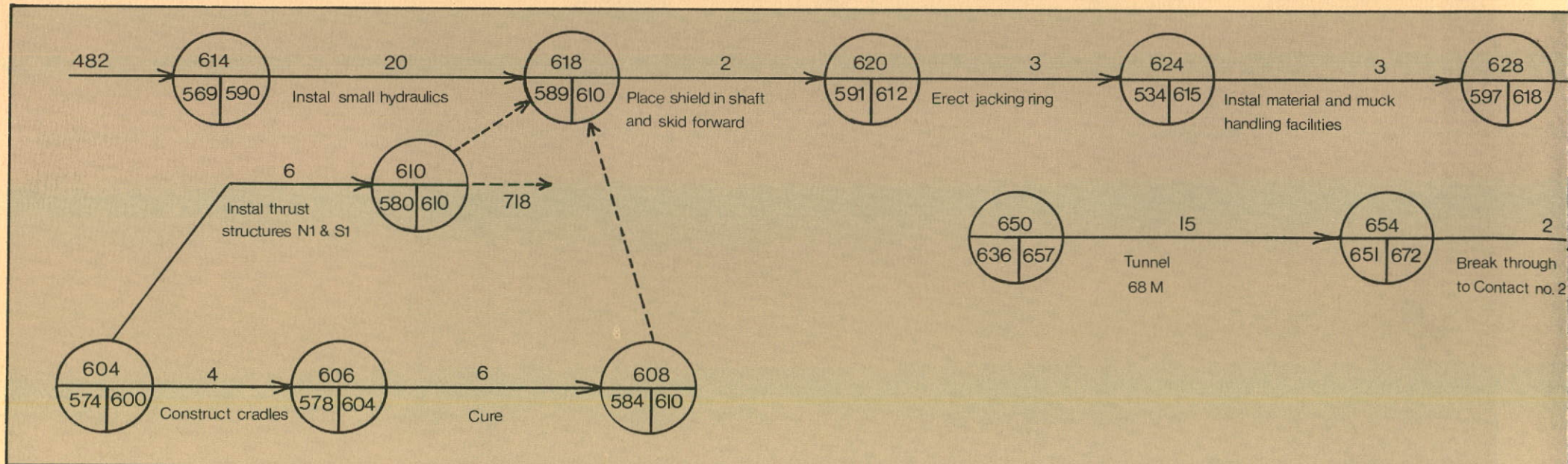
Facilities for mining, pulp and paper, iron and steel, and allied industries, municipal waterworks and sewage systems, and special projects for the oil and gas industry.

Commercial and Institutional:

High rise office and apartment buildings, housing developments, industrial plants, shopping centres, hotels, university, hospital and other institutional buildings.

Transportation:

Airport terminals, railroad stations, highways and interchanges, tunnel and skyway highways, subways.

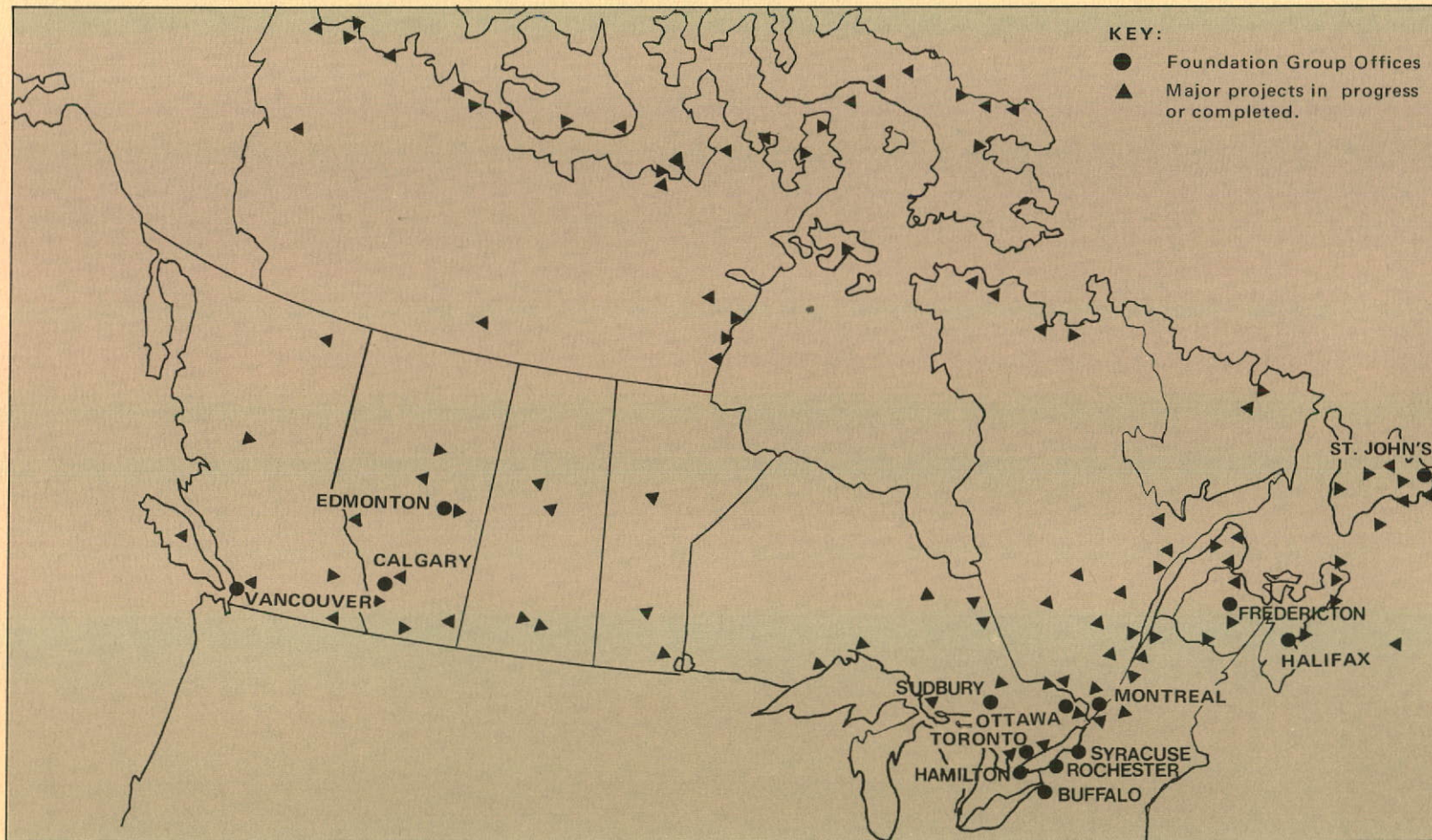


Specialized Technical Services

THE SERVICE DIMENSIONS OF FOUNDATION

Geographical Coverage

To ensure high calibre client service and to avoid potentially costly delays in decision-making, the Foundation Group maintains offices in all principal centres in Canada. In addition, management teams are located on site at all major projects. The chart below shows the location of Foundation Group offices and selected projects to demonstrate the geographical coverage of operations in Canada.



The Foundation Group also has extensive international activities. Engineering and construction projects have been undertaken in the following areas: Alaska, Andorra, Antigua, W.I., Arctic Ocean, Australia, Azores, Brazil, British Guiana,

Ceylon, Colombia, Dominican Republic, Guyana, India, Jamaica, Malaysia, New Caledonia, North Atlantic, Norway, Peru, Puerto Rico, San Domingo, Spain, Taiwan, Trinidad, U.S.A., Yugoslavia, Costa Rica and Hong Kong.

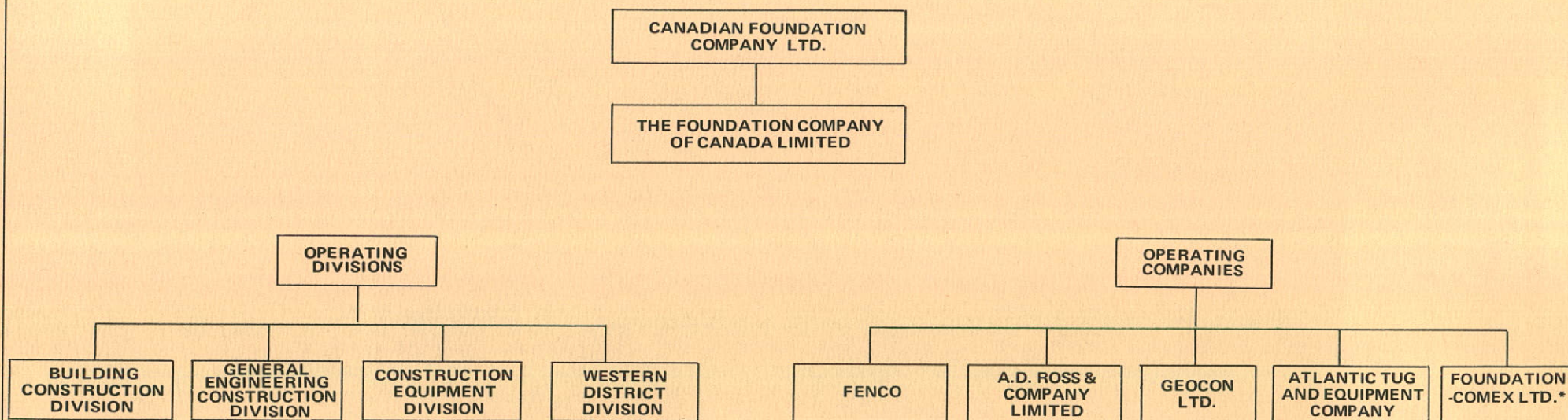
SOME OF THE MAJOR CLIENTS SERVED BY THE FOUNDATION GROUP

Abitibi Power & Paper Company
 Advocate Mines Ltd.
 Alabama Highway Department
 The Algoma Steel Corporation, Limited
 Aluminum Company of Canada Ltd.
 Asbestos Corporation Limited
 Atlantic Development Board
 Atomic Energy of Canada Limited
 Bank of Canada
 Bathurst Power & Paper Co. Ltd.
 Bell Telephone Co. of Canada
 British American Oil Co. Ltd.
 British Columbia Hydro and Power Authority
 Brown Corporation
 Canada Cement Lafarge Ltd.
 Canada Cement Company Limited
 Canadian Broadcasting Corporation
 Canadian Car Company Limited
 Canadian Johns-Manville Co., Limited
 Canadian National Railways
 Canadian Pacific Railway Company
 Canadian Refractories Limited
 Churchill Falls (Labrador) Corporation Limited
 Dalhousie University
 Dominion Cellulose Limited
 E.B. Eddy Co.
 Falconbridge Nickel Mines Limited
 Federal Electric Corporation
 Gaspé Copper Mines Limited
 Golden Eagle Canada Limited
 Government of Canada
 Government of British Columbia
 Government of New Brunswick
 Government of Newfoundland
 Government of Nova Scotia
 Government of Ontario
 Government of Quebec

Hydro Electric Power Commission of Ontario
 Imperial Oil Limited
 The International Nickel Company of Canada Limited
 ITT Sheraton Corporation of America
 Jones & Laughlin Steel Corporation
 Loblaw Groceries Co. Limited
 Mannesmann Tube Company Ltd.,
 McDowell-Wellman Engineering Company
 McGill University
 Michelin Tires Manufacturing Company of Canada Limited
 Mitsui and Company (Canada) Limited
 Molson's Brewery Limited
 Montreal Harbour Commission
 Mount Allison University
 The Municipality of Metropolitan Toronto
 National Harbours Board
 Newfoundland and Labrador Power Commission
 Noranda Mines Limited
 Nova Scotia Housing Corporation
 Nova Scotia Pulp Limited
 Nova Scotia Water Resources Commission
 Parsons & Whittemore Incorporated
 Project 200 Limited
 Quebec Cartier Mining Company
 The Rio Tinto Mining Company of Canada Limited
 Saguenay Terminals Limited
 Sheraton Design and Development Corporation
 Simpsons-Sears Limited
 The Steel Company of Canada, Limited
 Steep Rock Iron Mines Limited
 Thurso Pulp and Paper Company
 Toronto Transit Commission
 Trans Mountain Oil Pipe Line Co.
 University of Calgary
 University of Toronto
 U.S. Corps of Engineers

FOUNDATION GROUP CORPORATE STRUCTURE

The Foundation Group consists of a parent holding company, Canadian Foundation Company Ltd., which controls The Foundation Company of Canada Limited, and its wholly owned specialized technical subsidiary companies and divisions. The chart below illustrates the structural relationship between the various components of the Foundation Group.



OTHER SUBSIDIARIES:

FOUNDATION WESTERN LIMITED
FRONTIER CONSTRUCTION COMPANY, INC.
FOUNDATION OVERSEAS LTD.
FOUNDATION DEVELOPMENTS LIMITED
FOUNDATION MARITIME LIMITED
NATIONAL MATERIALS HANDLING LTD.

* Foundation owns 60 per cent of the outstanding shares of Foundation-Comex Ltd.

PRINCIPAL OPERATING COMPONENTS

The operating components of the Foundation Group cover virtually all phases of engineering and construction, from preliminary site testing and engineering studies, to final construction and electrical and mechanical installations. The various divisions and companies operate independently within their specialized fields except where client needs or the nature of a particular project require inputs from other Foundation Group components.

The Foundation Company of Canada Limited (FCC)

FCC provides a full range of construction capabilities and facilities in the heavy, industrial, marine, and building construction fields. Operations include total project execution, project management, joint ventures, or assignments covering any phase of large or medium scale construction. FCC operations are conducted through four operating divisions:-

- *Building Construction Division - Handles all phases of high-rise apartment and office construction, and other commercial and institutional structures.

- *General Engineering Construction Division - Administers specialist technical groups and project teams in the heavy, marine, mining and industrial construction fields.

- *Construction Equipment Division - Provides a sale and rental service for construction equipment. The inventory of equipment includes back-hoes, hydraulic cranes, asphalt plants for road building contractors, and ready-mix concrete trucks. The Division also provides servicing for Foundation Group construction equipment.

- Western Division — Provides decentralized operating management for all FCC operations in Western Canada. Western Division is fully staffed and equipped to perform all the specialist construction functions of the other FCC Divisions.

Foundation of Canada Engineering Corporation Limited (FENCO)

FENCO provides complete project management, engineering and design consulting services, ranging from preliminary planning and economic studies to total design and supervision of construction. FENCO also provides design input to Foundation Group design/build projects. Professional staff cover a broad range of disciplines including engineers,

economists, planners, architects and environmental scientists. FENCO maintains specialist divisions to serve the transportation, marine, industrial, mining and urban and environmental planning fields. A research and development group is also available to undertake scientific and engineering studies on behalf of clients.

A.D. Ross & Company Limited

A.D. Ross specializes in all aspects of mechanical and electrical installations. The company's services include installation of mechanical and electrical equipment for mining, pulp and paper, steel mills and power projects, and mechanical and electrical contracting in conjunction either with Foundation Group or other construction organizations. The company also provides maintenance services for electrical and mechanical installations.

Geocon Ltd.

Geocon provides consulting and geotechnical engineering services relating to soil and rock mechanics, engineering geology, foundation and earthwork engineering, and geotechnical processes generally. Services include site investigation, soil and rock drilling, off-shore drilling, dredging trials, engineering of major excavations, laboratory testing, and other related activities.

Foundation-Comex Limited

Foundation-Comex provides saturation deep-diving services, employing advanced techniques and cold water operations, for underwater construction projects.

Atlantic Tug and Equipment Company

Provides a construction equipment sale and rental service in the Northeastern United States.

Other Foundation Group Companies

The Foundation Group operates a number of subsidiary companies which perform a supplementary or complementary role in particular technical or geographical areas.

FOUNDATION GROUP OWNERSHIP AND MANAGEMENT

Ownership

Canadian Foundation Company Ltd. — a Canadian controlled public company — owns essentially all the outstanding shares of The Foundation Company of Canada Limited and its wholly owned subsidiaries. The largest single shareholder is A. Janin & Company Ltd., a Montreal-

based Canadian company. Janin has a long experience in Canadian construction and maintains heavy, industrial and commercial construction operations across Canada. While Janin and Foundation have certain common directors and officers, and have undertaken a number of joint ventures, both companies operate independently and under separate operating managements.

BOARD OF DIRECTORS



C. P. Baker*

Chm. of Canadian Foundation Company Ltd. and The Foundation Company of Canada Limited; Past President Heavy Construction Association of B.C.



R. I. Martin, Q.C.*

Senior Partner of Hume, Martin, Timmins and Allen and Director of McClelland and Stewart Limited.



D. H. Ward

Chm. of Dominion Securities Corp. Ltd., partner Dominion Securities Ltd., Director of Dover Industries Ltd., General Bakeries Ltd., Slater Steel Industries Ltd., and other companies.



***H. F. Gautrin, P.Eng.,**

Pres. & Chm. Exec. Comm. Canadian Foundation Company Ltd., Pres. and Man. Director of A. Janin & Company Limited, and other Canadian companies.

H.D. Roberts, M.D., C.M.
Pres. of Nfld. Building, Savings & Investments Ltd., Director of Newfoundland Steamships Ltd., and other Canadian companies.



Brig. F. C. Wallace, D.S.O., M.C.
Director of Simpsons Ltd., Westinghouse Canada Ltd., Canadair Ltd., Atomic Energy of Canada Ltd., and other companies.



C. W. Brazier, Q.C.

Senior Partner of Davis, Hossie, Campbell, Brazier & McLorg. Director of The Canada Trust Company, Pacific Western Airlines Ltd., and other Canadian companies.



F.G. Rutley, B.A.Sc., L.M.E.I.C.

Retired, served as Chm. of The Foundation Co. of Canada Ltd., from 1958 to 1962 and Honorary Director from 1962 to 1968.

*Denotes Member of Executive Committee

Senator L. Langlois, Q.C., B.A., LL.L.
Senior Partner of Messrs. Langlois, Laflamme & Gaudreau, Advocates. Director of several major Eastern Canadian companies.



***J.M. Tremblay**
Director, Vice-President and Secretary-Treasurer of A. Janin & Company Limited, past President of the Montreal Construction Association.



SENIOR OPERATING MANAGEMENT

Overall corporate management and policy formulation is conducted by the Board of Directors, the Executive Committee and senior officers of the parent holding company. Subject to this overall co-ordination, operational decision-making in each of the operating companies is decentralized to the maximum possible extent consistent with sound corporate management. This principle is carried through to the various

operating divisions and also geographically, through the regional executives. Operational decisions can therefore be made without delay by senior management people close to a particular situation. Where two or more Foundation Group companies or divisions are jointly involved in a project, a single project management authority is clearly laid down in advance.

THE FOUNDATION COMPANY OF CANADA LIMITED



Grant H. Bigelow*
Vice-Pres. Administration and Treasurer, C.A. Fifteen years experience in construction administration and finance with Foundation and Mannix Co. Ltd.



George H. Schuett, P.Eng.,
Vice-Pres. & Gen. Mgr. Western Division. Thirty years construction experience with Foundation, Anglin-Norcross Ltd., Commonwealth Construction Co. Ltd., and others.



Andrew Chmielenski, P.Eng., Dipl. Eng.
Pres. and Director. Joined Foundation in 1952. Specialist in port developments and marine engineering. Extensive engineering experience in the U.K., Europe and the Middle East.



Joseph N. Galli, P.Eng., B.Sc.
Vice-Pres. Joined Foundation in 1946. Responsible for Ottawa office and liaison with Federal Government agencies.

Paul G. Opler, P.Eng.*
Vice-Pres. (Also Vice-Pres. FENCO). Twenty-three years engineering and construction experience with Foundation, Acres Ltd., and Canadian Comstock Co. Ltd.



John F. Masterson
Vice-Pres. Joined Foundation in 1926. Forty-six years experience in the mining, pulp and paper, heavy and marine construction fields. Member, Canadian Pulp and Paper Assoc. and the Canadian Institute of Mining and Metallurgy.



W. Weinstein, P.Eng., B.Sc.
Senior Vice-Pres. & Director. Joined Foundation in 1959. Specialist in transportation engineering. Twenty-two years experience in design and supervision of construction of highways, tunnels and bridges in Canada and the U.S.



A.D. ROSS & COMPANY LIMITED

Jean R. Rousseau, P.Eng.*
Exec. Vice-Pres. & Gen. Mgr. Twenty years experience in all phases of construction with Foundation, Janin Construction Ltd., and on projects in Europe and Africa, including the Aswan Dam Power House in Egypt.



Einar Skinnarland*
Vice-Pres. & Gen. Mgr., General Engineering Construction Division. Specialist in heavy construction, particularly dams and power plants. Thirty years construction engineering experience.



Daniel F. Murphy, P.Eng.
Chief Eng. Joined Foundation in 1936. Served as special consultant to St. Lawrence Seaway Authority and Toronto Metropolitan Commission on foundation problems.



H. Walter H. Casper, P.Eng., B.Sc. (Honours)
Vice-Pres. Administration. Joined Foundation in 1947. Thirty-seven years experience in design and supervision of heavy engineering projects in Canada and abroad.

GEOCON LTD.



M.A.J. Matich, P.Eng., B.Eng., M.Sc.
Pres. Joined Foundation in 1953. Specialist in soil mechanics, engineering and research.

George Hay, P.Eng.*
Vice-Pres. & Gen. Mgr., Building Construction Division. Twenty years construction experience with Foundation, Defence Construction Ltd., C.M.H.C. and T. Fuller Construction Co. Ltd.



*Directors of The Foundation Company of Canada Limited

Rudolphe A. Chiasson, P.Eng., B.A., B.Sc.
Vice-Pres. & District Mgr., Montreal. Responsible for operations in Quebec. Joined Foundation in 1957. Specialized in heavy engineering projects.



CONSTRUCTION EQUIPMENT COMPANY DIVISION

Donald F. McLean
Gen. Mgr. Joined Foundation in 1950. Participated in many heavy and industrial construction projects prior to joining the Construction Equipment Division in 1959.



THE FOUNDATION GROUP IN OPERATION

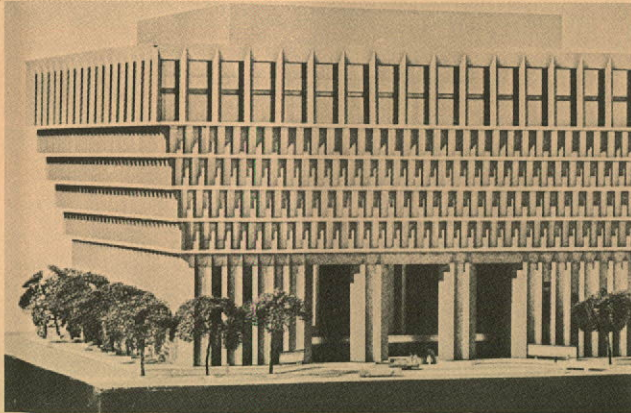
Projects undertaken by the Foundation Group have covered virtually every aspect of engineering and construction. And the range of skills and facilities contained in the Group mean that very few jobs are outside the experience or capability of Foundation. On design-build contracts, for example, the full resources of the Group can be brought to bear without having to call on other outside specialists. From site studies by Geocon, engineering and architectural design by FENCO, construction by Foundation, and electrical and mechanical design and installation by A. D. Ross, the entire project can be handled by an expert Foundation Group team with many years of experience of working together. For the client, this results in smooth project planning and co-ordination, and the time and cost savings that flow from efficient construction project management.

The range of Foundation Group skills is important even where only one company is involved in a project. Group specialists are moved freely between the various Group components -- a Geocon soil scientist may be assigned to a Foundation construction project, although Geocon may not formally be involved in the contract.

The following pages contain descriptions of typical Foundation projects undertaken in recent years. For convenience, they have been grouped in seven major categories:

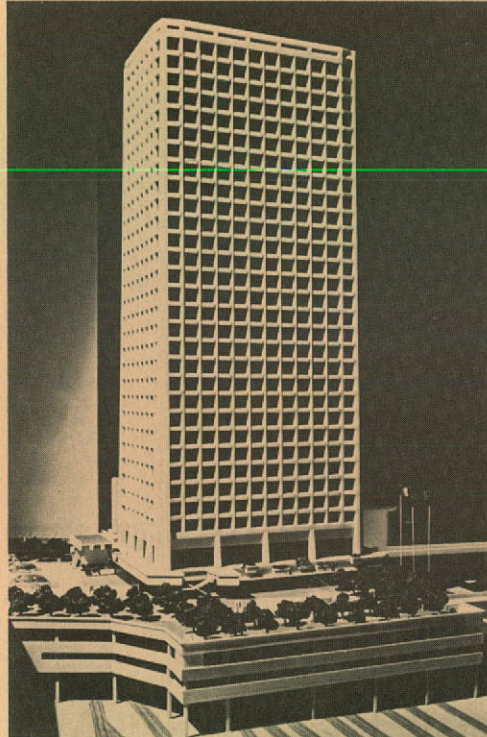
- Major Urban Construction Projects
- Heavy Construction Projects
- Transportation Projects
- Marine Engineering and Construction Projects
- Mining Industry Projects
- Pulp and Paper Industry Projects
- Institutional and Commercial Projects

MAJOR URBAN CONSTRUCTION PROJECTS



**THE SIMPSON'S-SEARS LIMITED
NEW HEADQUARTERS BUILDING**

A Foundation-sponsored joint venture with Janin Building and Civil Works Ltd., constructed the Simpson's-Sears Limited, headquarters building in Toronto. The building rises eight floors, inverted pyramid-style, from a 200 ft. x 200 ft. base and has three underground levels. A tunnel and a covered skywalk connect the new building with Simpson's-Sears' existing 11-storey structure.

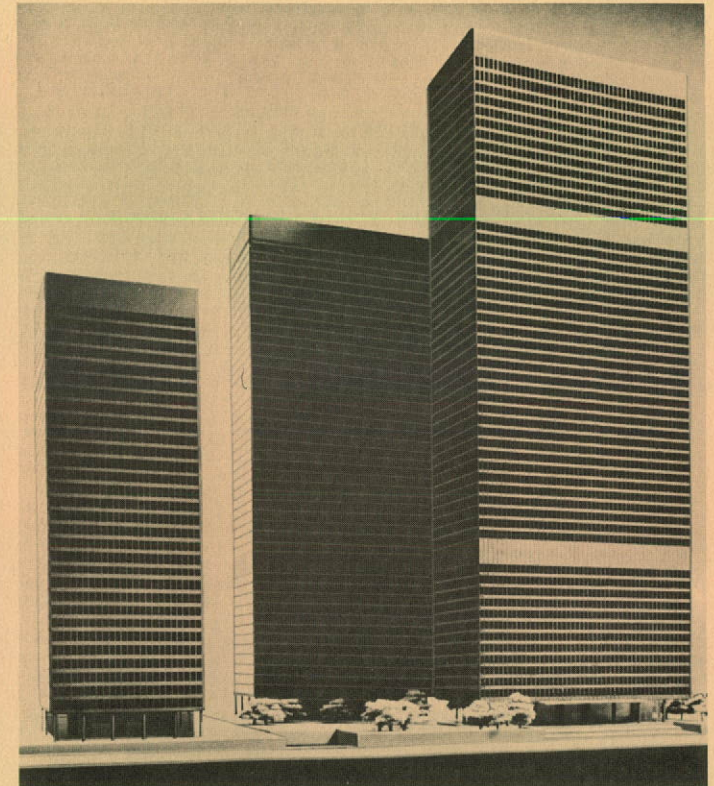


PROJECT 200

Phase I of "Project 200 - Granville Square" is rising above the C.P.R. tracks on Vancouver's waterfront on one hundred 50' caissons. Foundation Company of Canada Limited are general contractors for the \$18,000,000, 31-storey office tower, to be completed in 1972, for "Project 200 Investments Ltd."

The reinforced concrete structure, finished in buff chiselled concrete, is situated directly over the C.P. Railway's main Vancouver yard.

The main structure, seated on rubber pads 29 feet above track level, houses two levels of parking, a retail/plaza floor and a 28-storey office tower.



TORONTO DOMINION TOWER III

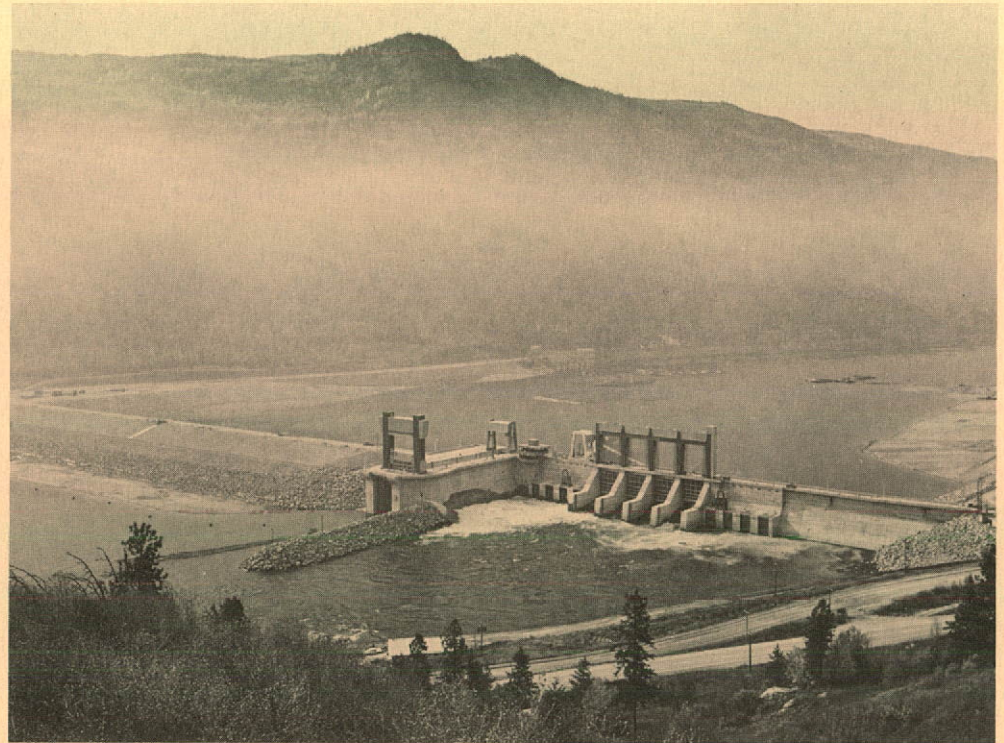
The estimated \$25 million building will be 32 storeys above grade with about 600,000 sq. ft. of office space. The new building is to be located at the northeast corner of Wellington and York Streets, and will be linked to the existing towers in the lower level shopping concourse with an additional 15 stores provided for. Completion and occupancy is anticipated by early 1974, with the Foundation Company of Canada Limited providing complete construction management services to the owner.

HEAVY CONSTRUCTION PROJECTS



CHURCHILL FALLS

Dyke GF2, built by the General Engineering Construction Division, under a Foundation sponsored and managed joint venture with Lundrigans Limited. The picture shows part of the East Forebay and Jacopie Lookout Dykes system of the Churchill Falls (Labrador) Corporation Limited Power Development. A fleet of 53 bulldozers, 20 front-end loaders and 45 trucks were employed in the excavation of 2 million cu. yds. of material and the placing of approximately 9 million cu. yds. of rock and fill.

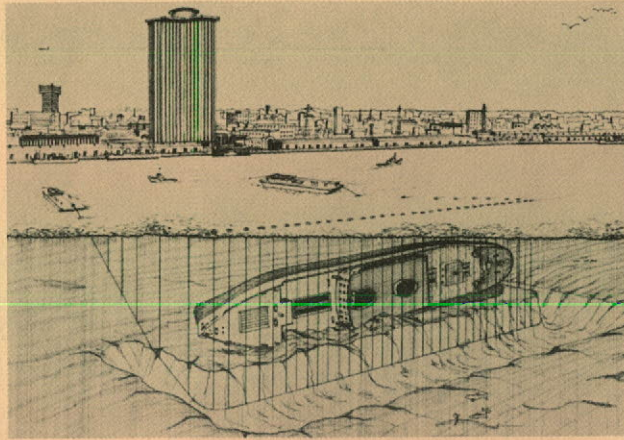


ARROW DAM

A project near Castlegar, British Columbia, on the Columbia River. Completed by Foundation in 1969, in a joint venture with Dravo of Canada Ltd., the dam has a total crest length of 2,850 ft. and a height of 170 ft. It includes an

earth fill section, along with a concrete spillway and navigation locks. This work was undertaken for the British Columbia Hydro and Power Authority. Mechanical and electrical installations were completed by A.D. Ross.

MARINE ENGINEERING & CONSTRUCTION PROJECTS



REMOVAL OF S/S "UNION FAITH"

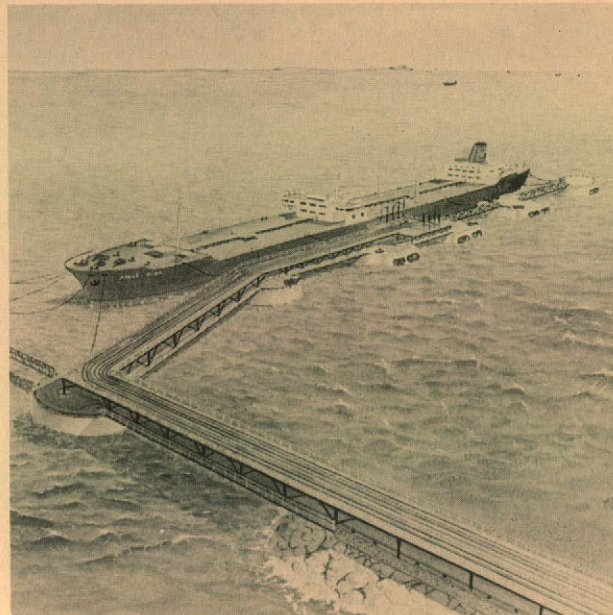
The 11,000 ton cargo vessel S/S "Union Faith" burned and sank in the Mississippi River at New Orleans in early 1969. In July 1970, the U.S. Corps of Engineers awarded a contract for removal of the shipping hazard to a Foundation-sponsored joint venture with Ingram and AT&E. The job was completed in a record 75 - calendar days. The wreck was buried in a 600 ft. long, 100 ft. wide and 50 ft. deep trench in 100 feet of water.

GOLDEN EAGLE TANKER TERMINAL, ST. ROMUALD

FENCO was retained by Golden Eagle Canada Limited to study the feasibility of constructing an all-weather terminal on the St. Lawrence River at which 100,000 DWT tankers could dock at all states of the tide, and in the severe ice conditions encountered in the lower St. Lawrence River.

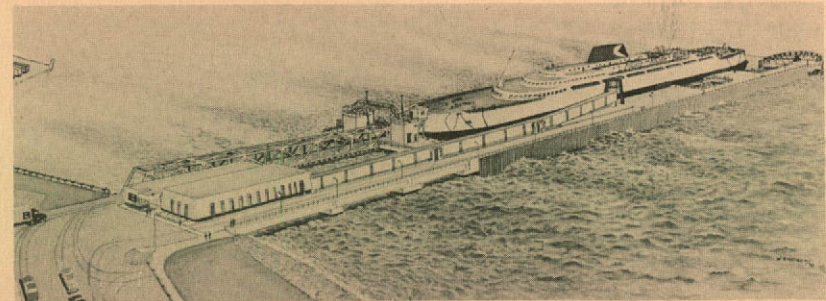
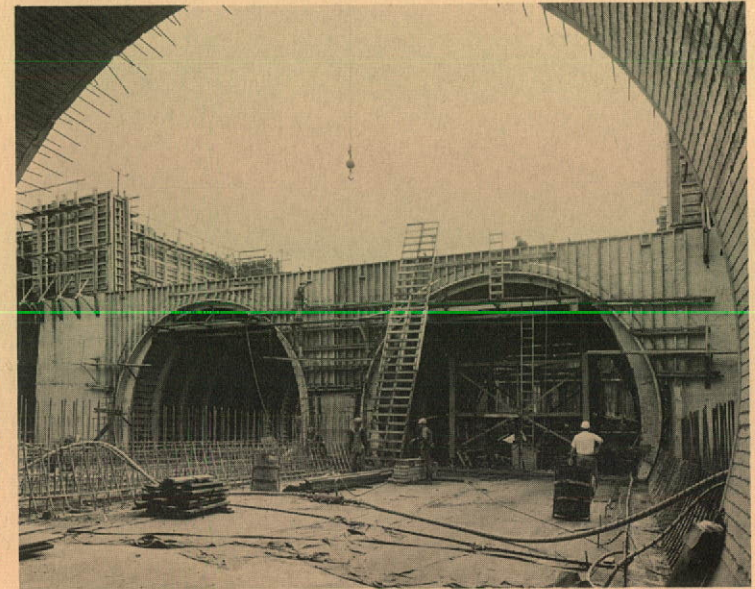
Hydraulic model tests were made to confirm the validity of the concept and the accuracy of the design calculations. Foundation was awarded a design-build contract for the wharf.

Soils studies were carried out by GEOCON, engineering design by FENCO, and construction by the General Engineering Construction Division



MOBILE RIVER TUNNEL

A vital link of Interstate Highway 10, in Alabama, the Mobile River Tunnel will provide for 4-lanes of travel through twin tubes, with the two eastbound lanes physically separated from those accommodating westbound vehicles. A joint venture of Winston Bros. Company, Atlas Construction Co. Limited and The Foundation Company of Canada Limited is constructing this \$47,000,000 project.



SAINT JOHN FERRY TERMINAL, NEW BRUNSWICK

FENCO undertook the preliminary engineering studies, final detail design and supervision of construction for the new Ferry Terminal at Saint John, New Brunswick. This Terminal was designed to accommodate a new Canadian Pacific Railway Company ferry, specifically

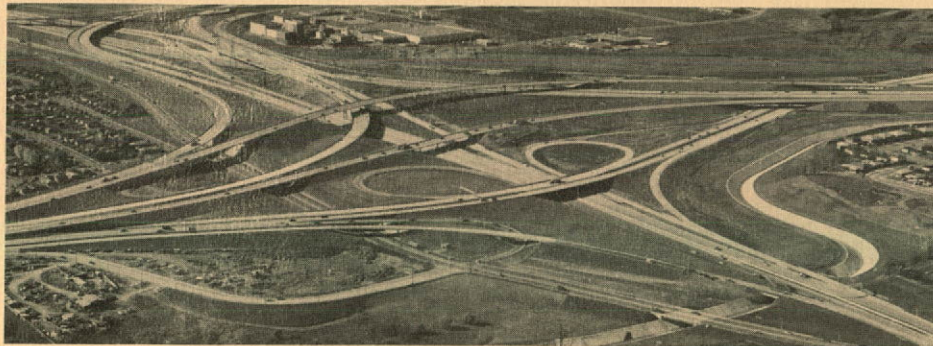
designed for the Bay of Fundy Crossing between Saint John and Digby, Nova Scotia. Access to the Terminal is by a vehicular underpass also designed by FENCO. A unique bow fendering system was developed to accommodate the front vehicle loading ferry.

TRANSPORTATION PROJECTS

SAINT JOHN HARBOUR BRIDGE NEW BRUNSWICK

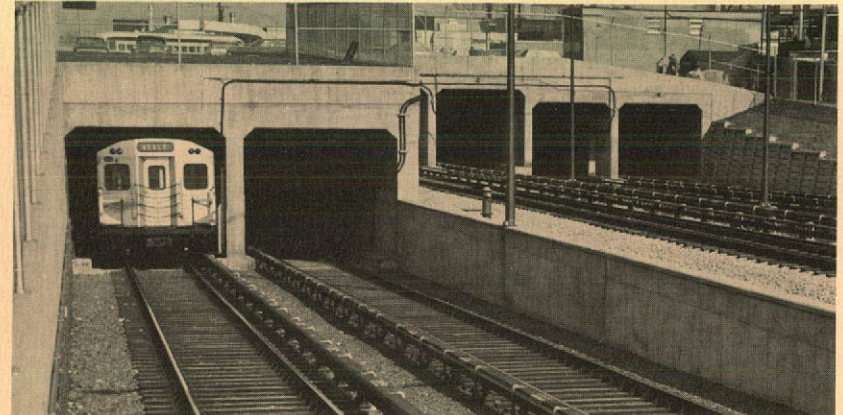
Completed in 1968, two months ahead of schedule, the bridge provides a shipping lane 300 feet wide with a clearance of 80.5 feet above high slack tide, and has 3,840 feet of elevated structure.

The approaches were constructed principally of prestressed concrete, while the main spans are of steel box-girder construction with an orthotropic steel deck. Construction cost was \$13.7 million, and design and engineering was by FENCO.



MACDONALD-CARTIER FREEWAY - TORONTO, ONTARIO

This FENCO assignment included the detailed design of several sections of the twelve lane freeway. Two sections, costing \$24 million, involve 5-1/2 miles of highway and three major interchanges including a multi-level interchange carrying a six-lane freeway and twenty-one bridge structures. Another section, an interchange at Highway 27, has the ramp equivalent of 29 miles of two-lane roadway and an approximate construction cost of \$35 million. FENCO'S lighting design for these sections was adopted for the entire length of the freeway.



TORONTO SUBWAY SYSTEM, ONTARIO

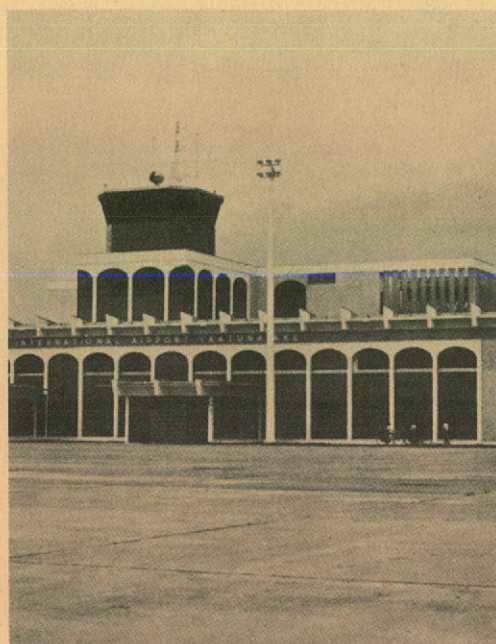
Foundation has undertaken a number of assignments in connection with this important urban transportation system. Construction assignments included the completion of 11 stations, a section of the Bloor-Danforth line from Yonge

Street to Avenue Road, and a \$6 million "cut and cover" track and station facility. FENCO undertook design and construction supervision for other sections of the line and also prepared studies for proposed extensions.



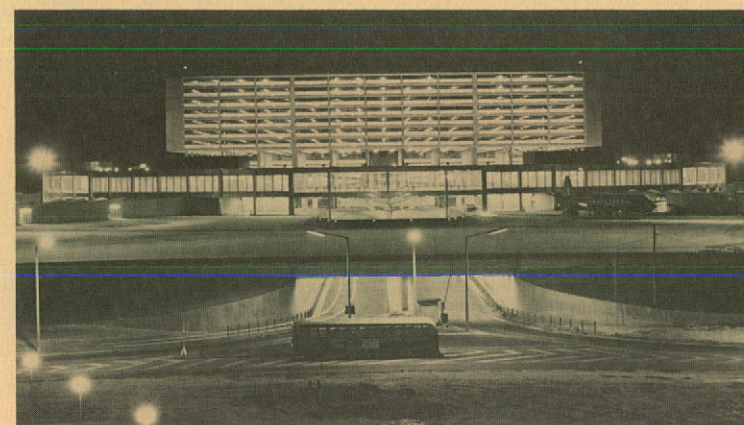
MONTREAL INTERNATIONAL AIRPORT

The superstructure of the main terminal building, the transborder finger loading area, the satellite aeroquay and the interior connecting tunnels of the Montreal International Airport complex were constructed by The Foundation Company of Canada Limited. The building was completed in October, 1960, providing Canada with one of the world's most modern and accommodating international air terminals. The airport complex was constructed under contract with the Federal Department of Transport.



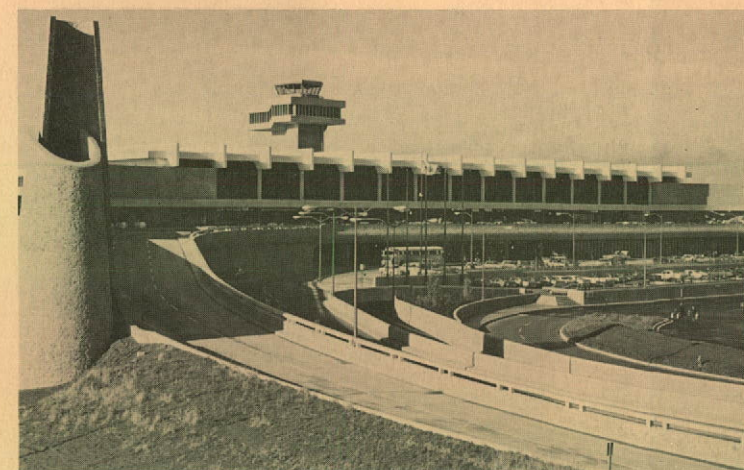
INTERNATIONAL AIR TERMINAL BUILDING KATUNAYAKE, CEYLON

FENCO was selected by the Department of External Aid to participate in the design of an international air terminal building at Katunayake, Ceylon. FENCO was also responsible for assisting in the supervision of construction of a new concrete runway and the terminal building and appurtenances. The airport facilities provide accommodations for the largest jets presently in operation, processing 250 passengers per hour.



TORONTO INTERNATIONAL AIRPORT

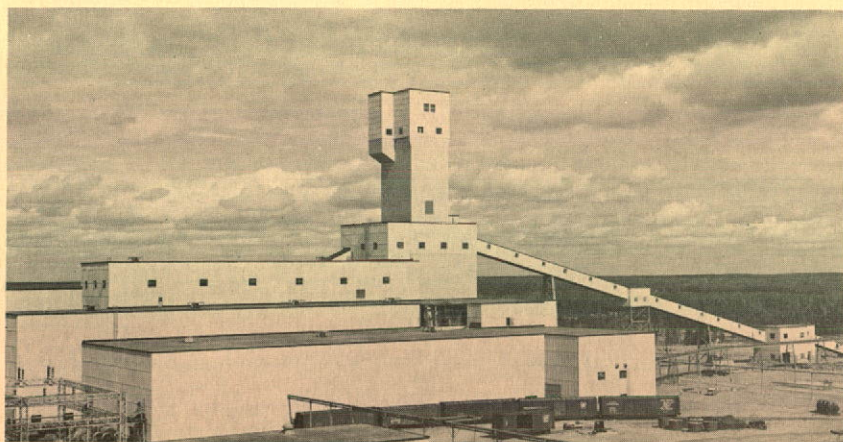
The Toronto International Airport aeroquay was constructed for the Federal Department of Transport by The Foundation Company of Canada Limited. When completed in July, 1962, it represented the latest in airport design and facilities to accommodate jet age travel.



VANCOUVER INTERNATIONAL AIR TERMINAL

This new terminal building at Vancouver International was opened to traffic in 1968. It is the third major air terminal to be constructed for the Federal Department of Transport by The Foundation Company of Canada Limited.

MINING INDUSTRY PROJECTS



INCO NICKEL MINING FACILITIES, THOMPSON

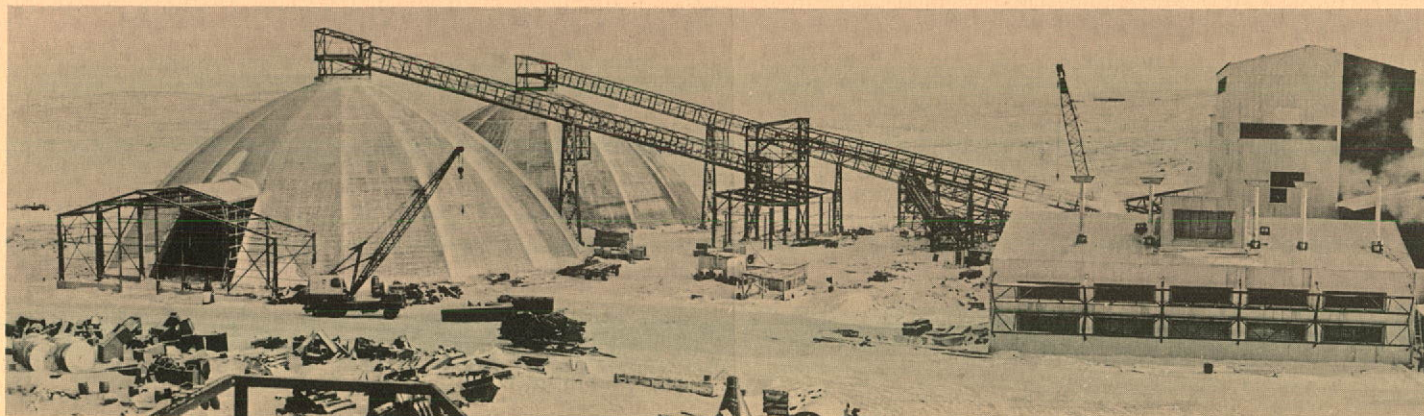
Thompson-Moak Development consisting of mine buildings and headframe, plant site buildings, installation of process equipment, yard facilities, townsite services, construction by Foundation for the International Nickel Co. of Canada Limited, at Thompson Lake, Manitoba.



IRON ORE BENEFICIATION PLANT

FENCO Engineers designed and The Foundation Company of Canada Limited built the Adams Mine Iron Ore Beneficiation Plant for Jones & Laughlin Steel Corporation in Kirkland Lake,

Ontario. The Plant consists of primary crushing plant, secondary and tertiary crushing plant, concentrator, pelletizing plant and pellet loadout. One million tons of iron ore pellets are produced annually.

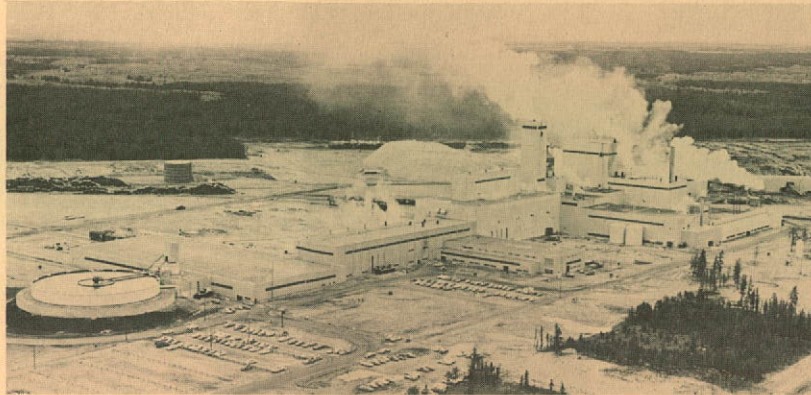


ASBESTOS HILL PROJECT

A \$30 million engineering and construction contract for the Asbestos Corporation Limited, by Foundation-Comstock-Janin, a joint venture sponsored by Foundation. The work includes the design and construction of an ore preparation plant and site facilities at Asbestos Hill, Ungava, and 40 miles of road, storage buildings, wharf and ship loading facilities at Deception Bay (Hudson Strait), 350 miles south of the Arctic Circle. FENCO served as engineers for the entire project.

A.D. Ross provided electrical and mechanical installations for each of these projects.

PULP AND PAPER INDUSTRY PROJECTS



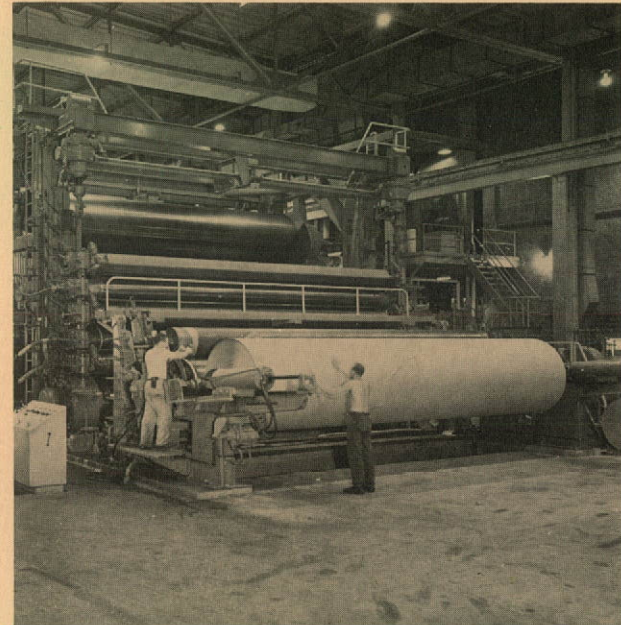
PRINCE ALBERT PULP MILL

The mill owned by the Prince Albert Pulp Company Ltd. was built by Foundation.



GASPE LINERBOARD MILL

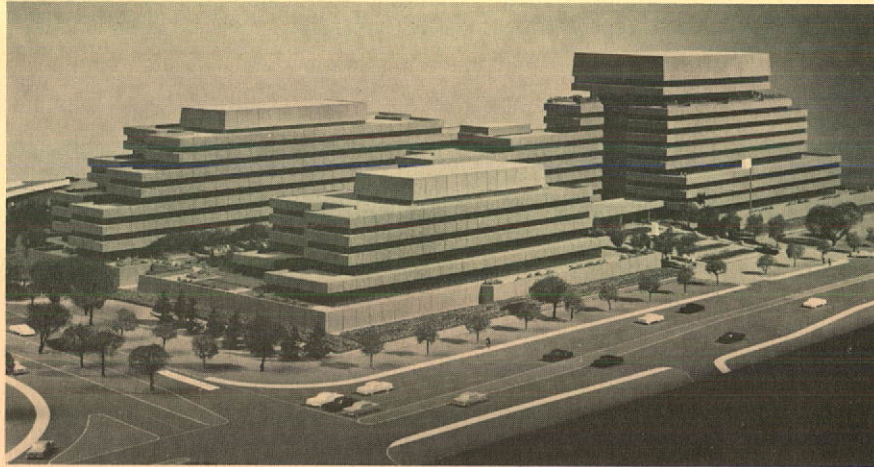
For the Kraft Linerboard Mill of the Bathurst Power & Paper Company Limited at New Richmond, P.Q., Foundation undertook civil construction and A.D. Ross and Foundation managed the mechanical and electrical installation work.



CIP KRAFT PULP & PAPER MILL

A \$23 million dollar expansion project at the La Tuque, Quebec, Kraft pulp mill of Canadian International Paper involved a new woodyard and an increase in pulping capacity of 90,000 tons a year to feed a new 276" Fourdrinier paper machine. Four years later a 176" machine was installed at a further cost of 11 million dollars. FENCO engineers carried out the design with the owners acting as process consultants. Construction and mechanical installation was done by Foundation and A.D. Ross

COMMERCIAL PROJECTS



EXTERNAL AFFAIRS HEADQUARTERS

The joint venture of Foundation and Janin is constructing the new Headquarters for the Department of External Affairs, Government of Canada, located on Sussex Drive in Ottawa. Consisting of four buildings and containing more than 1,000,000 sq. ft. of floor space, the complex will provide the most modern office facilities.



PLACE RADIO-CANADA

The Canadian Broadcasting Corporation's Radio and Television Production Centre "Place Radio-Canada" in downtown Montreal. A Foundation-sponsored joint venture with Janin Construction Limited acted as project manager/contractor for the \$35,000,000 project, completed on schedule in 1972.



SHERATON-LIMA HOTEL

Foundation is providing construction management for the 406 room hotel being built by ITT Sheraton Corporation of America in Lima, Peru. The hotel, designed by Edward Durell Stone of New York, is scheduled to open in 1973, and incorporates a broad range of Canadian equipment and services.

CANADIAN FOUNDATION COMPANY LTD.

The Foundation Company of Canada Limited

Foundation of Canada Engineering Corporation Limited

Geocon Ltd.

A.D. Ross & Company Limited

The Foundation Company of Ontario Limited

La Compagnie Foundation Limitée

Foundation Overseas Ltd.

Frontier Construction Company, Inc.

Atlantic Tug and Equipment Company

THE FOUNDATION COMPANY OF CANADA LIMITED

Head Office: Toronto 1, Ont., 1 Yonge St., 416-361-4611
CABLE: "Foundation" TELEX: 02-2814

DIVISIONS

FOUNDATION BUILDING CONSTRUCTION
Toronto 1, Ont., 1 Yonge St., 416-361-4652
TELEX: 02-2614

Ottawa, K1P5G4, 130 Albert Street, Ontario.
Suite 910, 613-232-3511

Halifax, N.S. 1549 Lower Water St., 902-429-9341
TELEX: 014-422845

**FOUNDATION GENERAL ENGINEERING
CONSTRUCTION**

Toronto 1, Ont., 1 Yonge St., 416-361-4671
TELEX: 02-2814

Montreal 215, P.Q., 4999 St. Catherine St. W., 514-482-9930
TELEX: 01-20733

Halifax, N.S. 1549 Lower Water St., 902-429-9341
TELEX: 014-422845

FOUNDATION WESTERN DIVISION

Vancouver 10, B.C. 295 East 11th Ave., 604-879-9461
TELEX: 04-33327

Calgary, Alta., 625 - 14th St. N.W., 403-283-0783
TELEX: 038-22713

FOUNDATION MARITIME LIMITED

Halifax, N.S. 1549 Lower Water St., 902-429-9341
TELEX: 014-422345

FOUNDATION DEVELOPMENTS LIMITED

Toronto 1, Ont., 1 Yonge St., 416-361-4611
TELEX: 02-2814

**CONSTRUCTION EQUIPMENT
COMPANY LIMITED.**

404 Old Weston Road, Toronto 168, Ont., 416-762-8351
TELEX: 08-217671

**FOUNDATION OF CANADA
ENGINEERING CORPORATION
LIMITED. FENCO**

Head Office: Toronto 1, Ont., 1 Yonge St., 416-361-4722
CABLE: "Foundaneng" TELEX: 02-2814

District Offices

Vancouver 10, B.C., 295 East 11th Ave., 604-879-6521
TELEX: 04-50126

Ottawa, K1P5G4, Ont., 130 Albert Street,
Suite 910, 613-232-3511

Hamilton 31, Ont., 505 Woodward Ave., 416-549-245

Montreal 215, P.Q. 345 Victoria Ave., 514-482-6715
TELEX: 01:-20733

Fredericton, N.B. 358 King St., 506-454-4447

Halifax, N.S., 1549 Lower Water St., 902-429-9341
TELEX' 014-422845

St. John's, Nfld. 239 Water St., 709-722-3145

Calgary 1, Alta., 540 - 5th Ave., S.W. 403-262-4613

DISTRICT OFFICE ABOVE CABLE: "Foundaneng"

GEOCON LTD.

Head Office: Montreal (Dorval) P.O. 2060 55th Ave.,
Phone 514-631-8967 - TELEX: 01-20733

District Offices

Toronto 601, Ont., 14 Haas Rd., 416-743-3031

Vancouver 10, B.C., 295 East 11th Ave., 604-879-2620
TELEX: 04-50126

Fredericton, N.B. T.C.H. & Hanwell Rd., 506-475-8967

Halifax, N.S., 1549 Lower Water St., 902-429-9341
TELEX: 014-422845

Sudbury, Ont., 1255 Kingsway, Hwy. 17, East 705-566-8701

A. D. ROSS & COMPANY LIMITED

Montreal 215, P.Q., 4999 St. Catherine St. W., 514-482-9930
TELEX: 01-9930

Toronto 1, Ont., 1 Yonge St., 416-361-4640
TELEX: 02-2814

Edmonton, Alta, 10355 Jasper Ave., 403-429-6866
TELEX: 037-3556

**THE FOUNDATION COMPANY OF ONTARIO
LIMITED**

Toronto 1, Ont., 1 Yonge St., 416-361-4671
CABLE: "Foundation" TELEX: 02-2814

LA COMPAGNIE FOUNDATION LIMITEE

Montreal 215, P.Q., 4999 St. Catherine St. W., 514-482-9930
CABLE: "Foundation" TELEX: 02-2814

FOUNDATION OVERSEAS LTD.

Toronto 1, Ont., 1 Yonge St., 416-361-4671
CABLE: "Foundation" TELEX: 02-2814

FRONTIER CONSTRUCTION COMPANY, INC.,

Toronto 1, Ont., 1 Yonge St., 416-361-4671
TELEX: 02-2814

ATLANTIC TUG AND EQUIPMENT COMPANY

Head Office: Buffalo, N.Y., 14224, 1701 Union Road
PHONE: 716-674-1111 TELEX: 09-1266

Rochester, N.Y., 3875 W. Henrietta Road, 716-334-5940
TELEX: 09-78374

East Syracuse N.Y., 6695 Old Collamer Road, 315-463-6611
TELEX: 09-37254

FOUNDATION - COMEX LIMITED

Toronto 1, Ont., 1 Yonge St., 416-361-4671
TELEX: 02-2814

Halifax, N.S., 1549 Lower Water Street, 902-429-9341
TELEX: 014-422845

