

THE ALGOMA STEEL CORPORATION, LIMITED



# STATISTICAL SUPPLEMENT TO 1971 ANNUAL REPORT

ALGOMA'S NEW 166" PLATE MILL covers over 14 acres at the Sault Ste. Marie Steelworks.





### COMPOSITION OF CONSOLIDATED SALES

	1971	1970	1969	1968	1967	1966	1965	1964	1963	1962
	%	%	%	%	%	%	%	%	%	%
Steel products - - - - -	92	92	88	91	90	91	89	88	85	81
Pig iron - - - - -	4	3	6	5	6	6	8	8	11	12
Sinter - - - - -			1	1	1	1	1	1	1	3
Coke, coal chemicals and sundry - - - - -	4	5	5	3	3	2	2	3	3	4
	<u>100</u>	<u>100</u>	<u>100</u>	<u>100</u>	<u>100</u>	<u>100</u>	<u>100</u>	<u>100</u>	<u>100</u>	<u>100</u>

There was little change in the composition of sales in 1971.

### GEOGRAPHICAL DISTRIBUTION OF CONSOLIDATED SALES

	1971	1970	1969	1968	1967	1966	1965	1964	1963	1962
	%	%	%	%	%	%	%	%	%	%
Eastern Canada - - - - -	13	16	13	12	13	15	14	13	12	13
Ontario - - - - -	52	58	62	56	56	59	59	58	53	51
Western Canada - - - - -	13	10	10	12	14	11	12	14	13	12
United States - - - - -	21	16	15	20	17	15	15	15	22	23
Offshore - - - - -	1									1
	<u>100</u>	<u>100</u>	<u>100</u>	<u>100</u>	<u>100</u>	<u>100</u>	<u>100</u>	<u>100</u>	<u>100</u>	<u>100</u>

With a weaker Canadian market in 1971, export sales to the United States increased.

### STEEL SHIPMENTS BY PRODUCT CLASSIFICATION

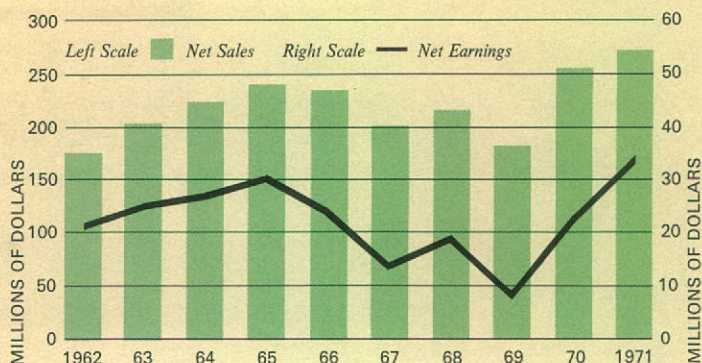
	1971	1970	1969	1968	1967	1966	1965	1964	1963	1962
	%	%	%	%	%	%	%	%	%	%
Plate and sheet products - - - - -	50	47	48	46	45	44	43	38	37	34
Structurals, including wide flange beams - - -	23	24	24	21	21	22	19	21	20	21
Rails and fastenings - - - - -	9	7	8	5	7	7	5	7	7	6
Bars and grinding media - - - - -	5	5	5	6	6	5	5	5	5	5
Tube rounds, seamless tubes and skelp - - -	9	12	11	15	11	13	18	22	19	19
Semi-finished - - - - -	4	5	4	7	10	9	10	7	12	15
	<u>100</u>	<u>100</u>	<u>100</u>	<u>100</u>	<u>100</u>	<u>100</u>	<u>100</u>	<u>100</u>	<u>100</u>	<u>100</u>

As a result of the addition of seamless tubular products, shipments have been reclassified. Shipments of plate and sheet products increased in 1971 and shipments of tube rounds were reduced by the purchase of inventory when the tube mill was leased.

The trends and data shown in these charts were influenced to a large extent in 1971 by a \$21.5 million extraordinary addition to earnings.

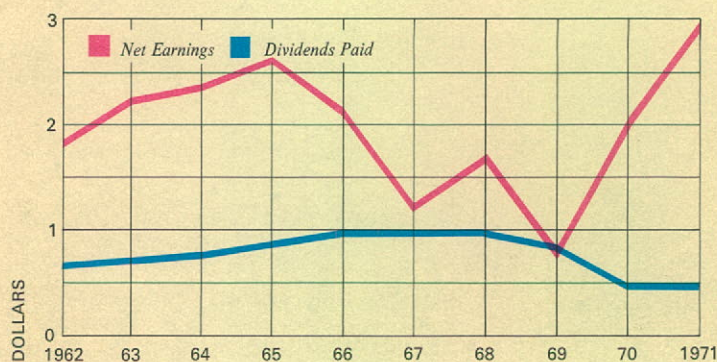
## NET SALES AND NET EARNINGS

Sales were higher in 1971 reflecting increased prices and sales of seamless tubes rather than tube rounds in the last quarter. Earnings from operations were lower but net earnings increased.



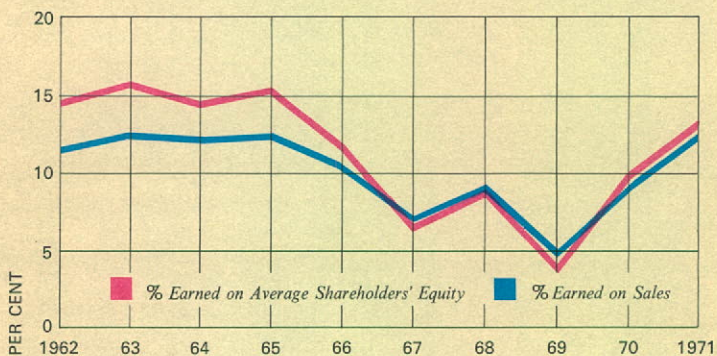
## NET EARNINGS AND DIVIDENDS PER SHARE OF COMMON STOCK

Dividends of 12½ cents per share per quarter were paid.



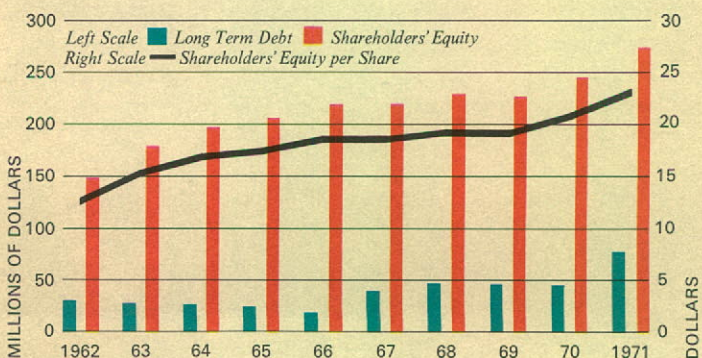
## PER CENT EARNED ON AVERAGE SHAREHOLDERS' EQUITY AND ON SALES

Earnings on equity and on sales increased to 13.3 per cent and 12.6 per cent respectively in 1971.



## LONG TERM DEBT AND SHAREHOLDERS' EQUITY

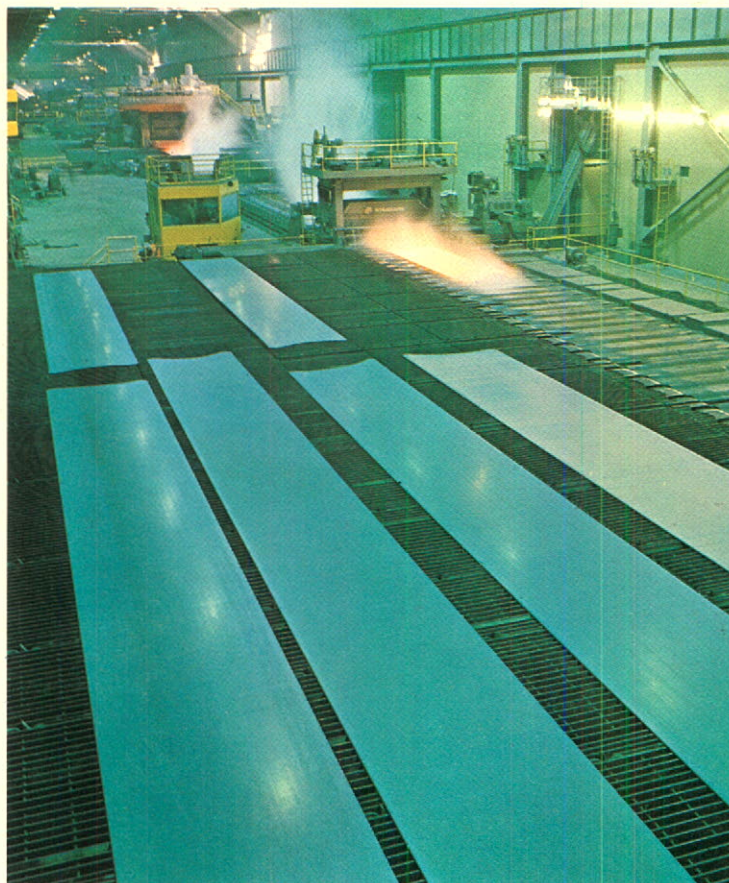
\$34 million debentures were sold in 1971 and long term debt rose to 22 per cent of invested capital. Shareholders' equity increased 12 per cent to \$23.56 per share.



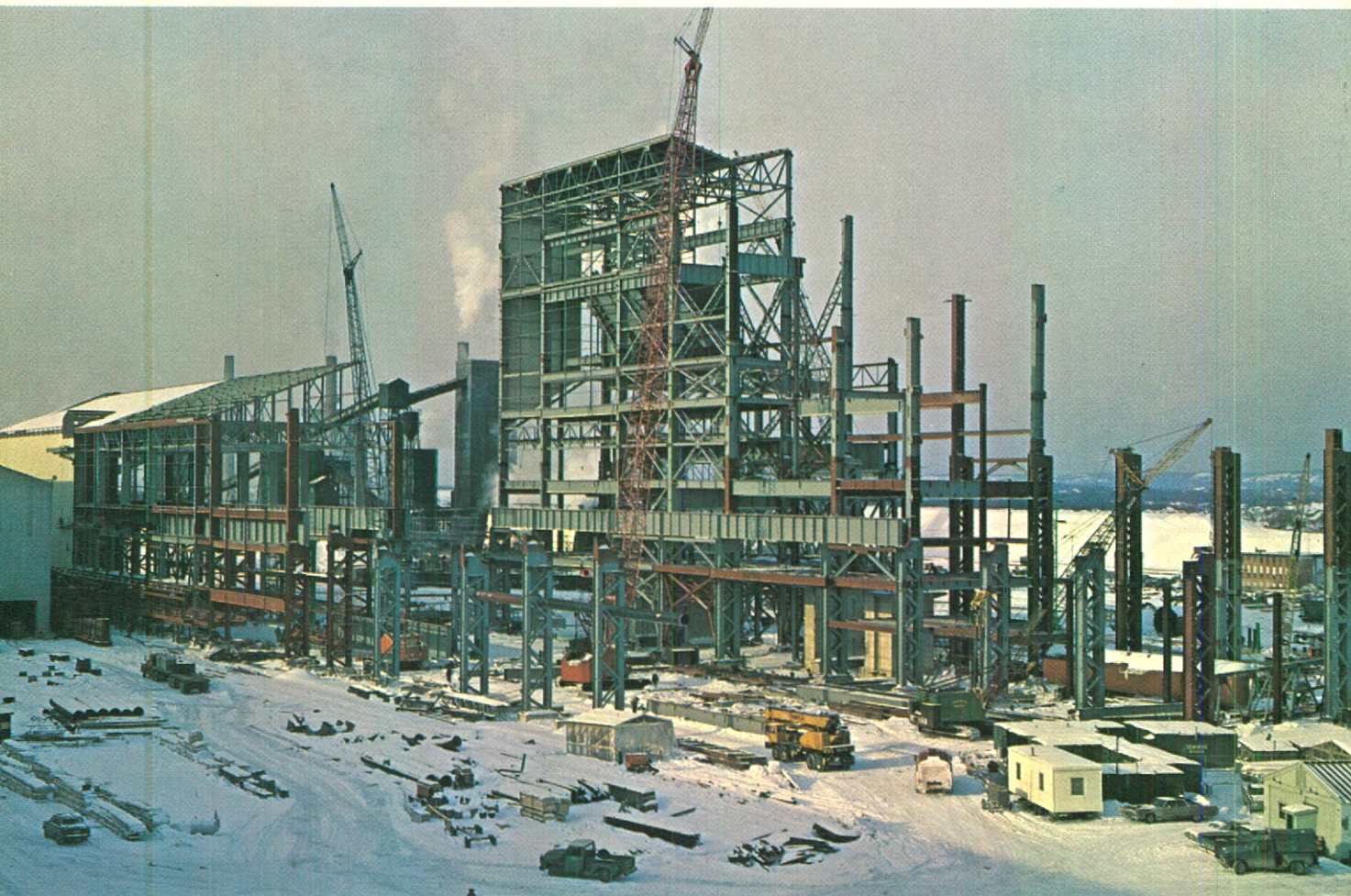




Slabs for the plate mill are discharged from the unique "walking beam" reheat furnace. They are then reduced by the 2-hi roughing stand and moved downstream to the 4-hi finishing stand.



Plates emerging from leveller to cooling bed where they are marked, inspected and cut before storage or shipment.



Construction of No. 2 Basic Oxygen Steelmaking Shop continues through the winter. The centre of the building is over 210 feet high.