

C stock
list



SASKATCHEWAN
GOVERNMENT
TELEPHONES

1966

ANNUAL REPORT

PURVIS MALE
LIBRARIES

MAR 11 1967

DIRECTORS

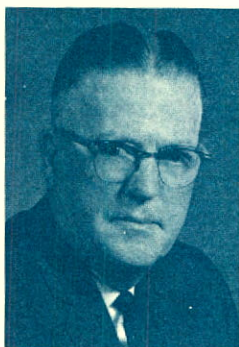
HON. A. C. CAMERON — Chairman
HON. GORDON B. GRANT — Regina
D. B. FURLONG, Esq. — Regina
HON. W. J. PATTERSON — Regina
R. L. PIERCE, Esq. Q.C. — Regina
A. G. STEWART, Esq. — Regina
A. T. WAKABAYASHI, Esq. — Regina

MANAGEMENT



G. D. McCORMICK

General Manager — G. D. McCORMICK
Assistant General Manager — Marketing and
Long Range Planning — C. W. SPARROW
Assistant General Manager —
Operations and Engineering — T. J. PRIEST
Comptroller — A. L. M. NELSON
Manager — Public and Employee Relations —
G. W. R. CLARKE
General Counsel and Secretary to the Board —
T. A. HOWE
Chief Engineer — S. F. LEE
General Commercial Manager — A. G. THOMAS
General Plant Manager — J. HOUSTON
General Traffic Manager — E. A. McKILLOP



HON. A. C. CAMERON
Chairman of the Board

SASKATCHEWAN GOVERNMENT TELEPHONES

HEAD OFFICE
2350 ALBERT STREET
REGINA, SASKATCHEWAN



Regina, Saskatchewan,
March 1, 1967.

To His Honour,
The Honourable Robert Leith Hanbidge, Q.C.
Lieutenant Governor of the
Province of Saskatchewan.

Sir:

I have the honour to submit herewith the annual report of Saskatchewan Government Telephones for the year ending December 31, 1966 including the financial statement therefor, duly certified by the Provincial Auditor of Utilities, and in the form approved by the Treasury Board, all in accordance with the Saskatchewan Government Telephones Act.

I have the honour to be Sir,
Your obedient servant,

A handwritten signature in cursive script, appearing to read "A. C. Cameron".

Minister of Telephones and Chairman
Saskatchewan Government Telephones.

HIGHLIGHTS OF 1966

- Telephones in service increased by 17,889, bringing the year-end total to 265,765. (Switching service was provided for an additional 53,231 rural company owned telephones.)
- Long distance messages originating in Saskatchewan increased by 8.9% to a total of 15,448,091.
- Telephone service commenced in the first Unserved Area project.
- Twenty-two exchanges were converted to dial operation, bringing the total in service to 159.
- Direct Distance Dialing was introduced in thirty-one exchanges, bringing the total to 67.
- Plant additions amounted to \$20,054,286, bringing the total plant investment to \$172,411,573.
- New capital obtained by way of advances from the Provincial Treasurer amounted to \$7,401,000.
- Revenues increased by 10.9% ; operating expenses by 11.5%.
- Net Income amounted to \$6,831,255, an increase of 10.5% over 1965.
- An amount of \$3,800,000 will be paid out of earnings as a dividend to the Province of Saskatchewan.

SASK  TEL

To accentuate the commercial nature of the Corporation, its broad scope of services, and its association with other Canadian telephone companies in providing nation-wide telecommunication services, the Corporation adopted SASK TEL as its trade name. The new name will be introduced progressively on equipment, vehicles, promotional material and in advertising.

1966 ANNUAL REPORT

LOCAL SERVICE GROWTH

For the fifth successive year SASK TEL achieved a record in the number of telephones gained. During 1966, 17,889 telephones were added bringing the total in service to 265,765. To achieve this net gain 87,162 telephones were connected or installed and 69,273 were disconnected. During the year SASK TEL installed its quarter millionth telephone in service — an addition of 50,000 in less than three years.

With the conversion during the year of twenty-two exchanges to dial operation (for a list of these exchanges see page 13) the percentage of automatic telephones owned by the Corporation increased from 90.4 to 91.6. Taking into account rural telephone companies, the percentage of all Saskatchewan telephones which are now dial operated is 86.9. At the year end, there were 159 dial exchanges and 227 manually operated exchanges in the Corporation's plant.

The popularity of extension telephones in homes continued to grow. During the year 3,346 extensions were added for the convenience of the residence subscriber. At the year end there were 21,591 extension telephones in customers' homes and 16,864 in business establishments.

SASK TEL's new program to make telephone service available to some 7,000 farms in areas that have no service and where it is not practical that they be served by rural telephone companies, established its first service in the Mankota area.

Some 90 farm families are now enjoying telephone service which, until now, was not available to them.

Preliminary engineering studies were completed for twenty-three more program areas and consultations with the farm residents in the Consul, Minton, Mitchelton, Ormiston, Rabbit Lake, Rockglen, Spiritwood and Wood Mountain areas were underway as the year closed. It is hoped that these efforts will culminate in the necessary extension of telephone service to the farmers in these and others parts of Saskatchewan.

In addition SASK TEL continued to provide local switching service for rural telephone company subscribers. At the year end 53,231 rural company owned telephones were connected to Corporation exchanges for this purpose. Of the 1966 total 33,713 or 63.3% were dial operated as compared with 30,615 or 58% at the previous year end. In addition, there are fifteen exchanges owned by rural telephone companies serving 1,868 telephones, that are connected to the SASK TEL network for long distance service only.



SASK TEL'S first "Unserved Area Project" brought telephones to many farm homes in the Mankota area. This lady now shares the convenience, pleasure and security of telephone service with her town friends.

GROWTH IN LONG DISTANCE SERVICE

The total of 15,448,091 long distance messages, which originated in Saskatchewan in 1966, also established a new record for the fifth successive year. The increase in the number of calls was 1,266,567 or 8.9% over 1965. It was the first year in which the number of calls exceeded one million in each month.

An appreciable increase in the proportion of station-to-station long distance calls to person-to-person calls was recorded. Contributing to the swing to "station calling" was the introduction of Direct Distance Dialing in thirty-one additional exchanges in the province during the year (for a list of these exchanges see page 13) and a new long distance rate schedule for Saskatchewan which came into effect on June 1st, 1966. The latter increased the spread between the charges for the two types of long distance service, and at the same time decreased rates for "station" calls over 90 miles and "person" calls over 240 miles. Reduction in charges for long-haul person-to-person long distance calls, which require a "secretarial" type of service, were made possible through technological advances in transmission and increased volume of business.

A rate reduction on calls to points in Canada outside Saskatchewan went into effect March 6th, 1966, when evening and Sunday "station" rates were reduced for calls in excess of 900 miles. The advancement of automation and new techniques in operating long-haul long distance calls made these reductions possible.

During the year, Direct Distance Dialing equipment was put into service at Swift Current, Yorkton, Melville and their connecting community dial offices. This brought the year end total of exchanges equipped to originate DDD calls to sixty-seven. Together they represent nearly 59% of the province's telephones.



Operators supply distant numbers to the many DDD customers who dial the assigned area code and 555-1212 . . . the continent wide number for Long Distance Information.

CONSTRUCTION GROWTH

To meet the service needs of a steadily expanding economy SASK TEL is required to make large capital expenditures. Our customers not only use a greater variety of our services but will use them more frequently and for new purposes.

In 1966 the value of telephone property increased by \$15,396,560 (net) to bring the year end total to \$172,411,573. This was a record increase in facility growth. Indications are that capital spending will continue at a relatively high level for the next several years.

A start was made on the Saskatchewan section of the Prairie Microwave network which runs from Melita in southwest Manitoba through Regina and Saskatoon to Blackfoot in eastern Alberta. Construction of buildings has been completed at Asquith, Lizard Lake, Denholm, Prince, Paynton and Lashburn and tower erection was started on this portion of the route. Building construction was underway for repeater stations at Gainsborough, Oxbow, Lampman, Blewett, Griffin, Osage, Lajord and Regina (east). The existing route between Craven and Saskatoon will connect the two sections now under construction. The new network will provide needed facilities to cope with the high traffic growth in the prairie region and become an alternate microwave route across the province.

In addition to the large volume of construction projects associated with the dial conversions and direct distance dialing installations mentioned earlier in this report, DDD equipment was installed at Prince Albert to meet the in-service date of January 15th, 1967.

Equipment installation in Regina's new Pasqua Street switching centre was nearing completion at the year end. This new center is designed to serve the expanding north-west section of the city, and, by transfer of some of the services presently switched in the 8th Avenue building, relieve congestion in the switching facilities serving the north central section of the city.

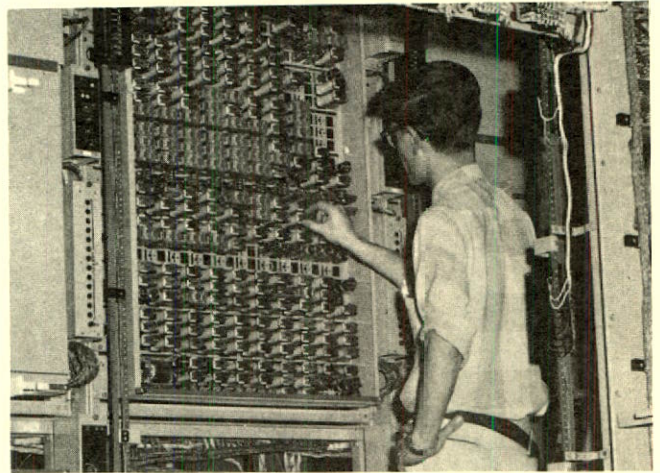
In an effort to provide telephone service which is as reliable as possible and not affected by climatic conditions SASK TEL continued to expand its buried cable program. All new construction for long distance and feeder services is utilizing buried cable, micro-wave or point-to-point radio systems.

In 1966 two hundred and thirty-two miles of long distance cable and three hundred miles of local service cable were buried at a cost of some \$2,000,000.

In the same period approximately \$1,000,000 was spent to add just over 275 route miles to the radio network. In addition, some 20,500 circuit miles were added to the long distance radio network by means of equipment additions at a cost of \$2,500,000.

MARKETING

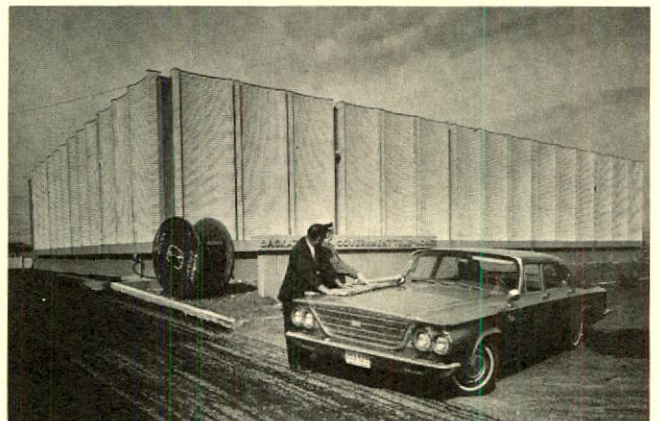
Sales of new or additional business services set a new record in 1966. While SASK TEL did not introduce new or markedly different service offerings, discretionary telephone services, in addition to the basic services, were recognized as necessary by the business community. Efforts of the Corporation's marketing personnel resulted in a high level of business installations. These included WATS (Wide Area Telephone Service); closed circuit television; private lines; data speed; Phone Fax; TWX; and the many custom designed private branch exchanges which were installed.



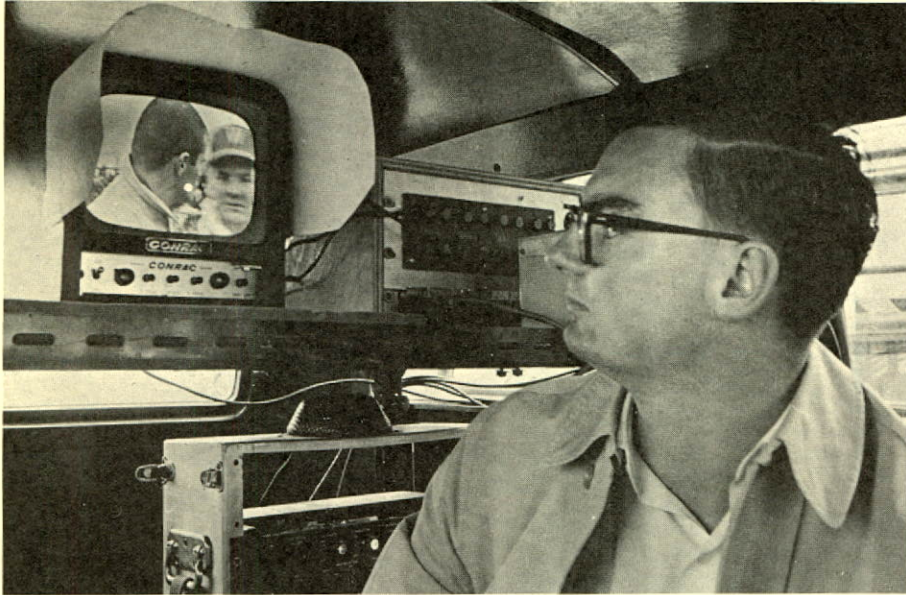
Switching equipment for Direct Distance Dialing is carefully checked before being put into service.



Details of time, place called, length of conversation etc. for DDD calls are recorded on tape prior to being processed for billing.



Regina's Pasqua Street switching center is being housed in this building to meet the growing demand for telephone service in the northern part of the city.



SASK TEL's Television Program Transmission Service provided the link between TV cameras on the field and the TV networks so that all of Canada could watch the exploits of the Saskatchewan Roughriders.



During the year 130 telephones were installed in subscribers' vehicles bringing the year end total to 625. New base stations are increasing the number of areas which can be served by private or general mobile telephone.

TRAINING AND SAFETY

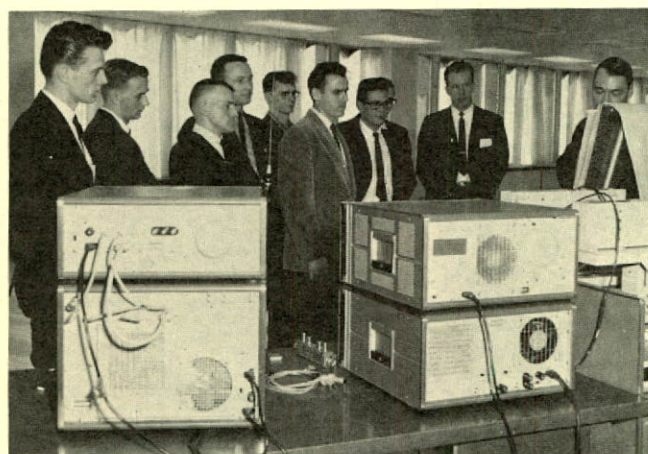
Employees are selected carefully and trained well. Development programs are carried on continuously to help employees attain their full potential in skills and leadership abilities.

During 1966, training was afforded to 1,420 employees. Sixty-five different courses were available and of that number nine new courses were introduced.

In the Traffic Department, programmed training was introduced for operators at Regina, Moose Jaw and Saskatoon. Accounting personnel received training in computer operation and data processing. Courses in electronics, transistors, radio, X-bar and relays, as well as installation and maintenance procedures were conducted by the Plant Department to insure trained staff for the efficient operation and maintenance of the Corporation's complex equipment. The engineering Department conducted training in engineering economy, dedicated plant, and other subjects related to engineering planning. The Marketing and Commercial Departments also conducted related training programs.



Classroom sessions played a major role in customer relations training for the Commercial Department staff.



University of Saskatchewan students were given a glimpse of the complexities of telephone engineering.



SASK TEL personnel were trained as instructors in Driver Improvement . . . a program which, in association with the Saskatchewan Chapter of the Telephone Pioneers, will involve both Corporation Staff and their families.

SASK TEL embarked on a new safety training project to improve the driving habits, not only of those whose job requires them to operate vehicles, but, on a voluntary basis, for all Corporation employees and their families. In co-operation with the Saskatchewan Safety Council, instructor training courses were held and the program commenced.

Coincident with the commencement of this program, SASK TEL adopted, as an aid to highway safety, gold and white vehicle colours and reflective blue markings, replacing the traditional dark green.

STAFF

The task of providing Saskatchewan with a complete communication service was handled by some 2,412 employees and the achievements of SASK TEL in 1966 were due in large measure to the conscientious application of their skills, knowledge and ability. Their day-to-day performance is the vital factor which gives meaning and purpose to the millions of dollars invested in new plant each year.

Employees, represented by the Communications Workers of America, joined with management personnel in community service projects. Blood donor clinics were conducted in the Corporation's major centres. At other points where size did not warrant special clinics, SASK TEL employees participated in local blood donor programs. Sizeable increases in employee contributions to United Appeal Drives were recorded, demonstrating the staff's support of community sponsored welfare activities.



Safety practices are emphasized in the training of linemen.

THE FINANCIAL RECORD

The year's revenues of \$36,112,256 showed an increase of \$3,558,160 or 10.9% over those of the previous year. Local service revenues increased by 8.4% due in large measure to the continued growth in telephones. Toll service revenues increased by \$2,420,162 or 12.4%, reflecting mainly the increased volume of toll messages. Miscellaneous operating revenues, comprising primarily revenue from directory advertising and rental revenue, also reflected a significant increase.

Operating expenses for the year amounted to \$24,227,142, an increase of \$2,494,996 or 11.5%. Depreciation charges and salaries and wage costs are the two most significant expense items and increases in these two categories amounted to approximately \$1,000,000 and \$800,000 respectively, during the year. Other less significant increases occurred in such items as maintenance supplies, rentals paid for rented circuits and Canada Pension Plan contributions, the latter having commenced during 1966.

Net operating revenue rose by \$1,063,164 or 9.8% over that of the previous year. Fixed charges increased by \$505,895, reflecting added grants in lieu of taxes of \$33,564 and an increase in interest charges in the amount of \$468,344. Net Income for the year was \$6,831,255.

Cash flow arising from operations during the year amounted to \$14,177,695, an increase of \$1,579,642 over that of the previous year. New capital in the amount of \$7,401,000 was obtained by way of advances from the Provincial Treasurer.

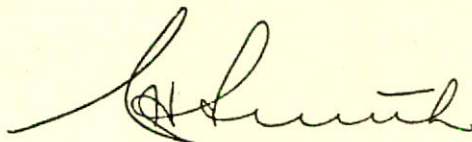
Construction expenditures for the year totalled \$20,054,286, an increase of \$2,835,971 over 1965. A total amount of \$4,477,422 was required to retire or make provision for retiring capital advances. An amount of \$3,800,000 was earmarked as a dividend payable to the Province of Saskatchewan while the balance of net income amounting to \$3,031,255 will be retained in the corporation to help meet its capital requirements.

AUDITOR'S REPORT

Pursuant to the provisions of Section 36 of The Saskatchewan Government Telephones Act, an examination of the records and accounts of the Saskatchewan Government Telephones has been made under my direction for the year ended December 31, 1966. All the information and explanations required by me have been obtained. The examination included a general review of the accounting procedures and such tests of accounting records and other supporting evidence as was considered necessary in the circumstances.

Provision has been made for depreciation of buildings, plant and equipment in accordance with regulations made by the Lieutenant-Governor in Council pursuant to Section 35 of the Saskatchewan Government Telephones Act. Full provision has been made for interest on capital advances.

I report that, in my opinion, the accompanying Balance Sheet and Statement of Income and note appended thereto are properly drawn up, in accordance with generally accepted accounting principles applied on a basis consistent with that of the preceding year, except as referred to in Note 1, so as to show a true and correct view of the financial affairs of the Saskatchewan Government Telephones as at December 31, 1966, and the results of its operations for the year ended on that date, according to the best of my information and the explanations given to me and as shown by the books of account.



Regina, Saskatchewan,
February 10, 1967.

C. H. Smith, F.C.A.,
Provincial Auditor of Utilities.

SASKATCHEWAN GOVERNMENT TELEPHONES

BALANCE SHEET

AS AT DECEMBER 31, 1966 (1965)

ASSETS	1966	1965
TELEPHONE PROPERTY		
Land and Buildings (at Cost)	\$ 21,207,791	\$ 20,029,953
Telephone Plant and Equipment (at Cost)	149,125,397	136,377,445
	<hr/>	<hr/>
	\$ 170,333,188	\$ 156,407,398
Less: Accumulated Depreciation	51,125,586	45,291,089
	<hr/>	<hr/>
	\$ 119,207,602	\$ 111,116,309
Construction in Progress	2,078,385	607,615
	<hr/>	<hr/>
	\$ 121,285,987	\$ 111,723,924
	<hr/>	<hr/>
SINKING FUND AND OTHER ASSETS		
Equity in Government of Saskatchewan		
Sinking Funds (Note 1)	\$ 30,286,991	\$ 25,729,224
Sundry Other Assets	6,117	6,064
	<hr/>	<hr/>
	\$ 30,293,108	\$ 25,735,288
	<hr/>	<hr/>
CURRENT ASSETS		
Cash and Temporary Cash Investments	\$ 1,358,151	\$ 4,593,374
Accounts Receivable (less allowance for doubtful accounts)	4,972,662	4,223,237
Material and Supplies (at Cost)	2,931,194	3,264,981
Prepayments	434,554	313,040
	<hr/>	<hr/>
	\$ 9,696,561	\$ 12,394,632
	<hr/>	<hr/>
DEFERRED CHARGES		
Unamortized Discount and Expense on Government Advances	\$ 1,437,031	\$ 1,553,611
	<hr/>	<hr/>
	\$ 162,712,687	\$ 151,407,455
	<hr/>	<hr/>
<p>Note 1: Effective January 1, 1966, discounts or premiums on bonds purchased as sinking fund investments are being amortized over the remaining life of such investments. Prior to January 1, 1966, the full amount of such discounts or premiums was recorded as an addition to or deduction from earnings in the year of purchase. As a result, the corporation's share of sinking fund earnings for 1966 and its equity in the sinking fund at the year-end are \$501,311 less than would have been the case under the former method of accounting.</p>		

LIABILITIES

1966

1965

CAPITAL EMPLOYED

Liability for Advances made by Government of Saskatchewan	\$ 128,249,678	\$ 121,958,293
Provision for Exchange on Capital Advances Payable in U.S. Dollars	794,129	876,973
Earnings Retained for Capital Expenditures	23,770,445	20,739,190
Provision for Fire Losses	35,352	27,838
	<u>\$ 152,849,604</u>	<u>\$ 143,602,294</u>

CURRENT AND ACCRUED LIABILITIES

Interest Accrued on Government Advances	\$ 1,643,348	\$ 1,568,314
Accounts Payable	3,875,046	1,845,180
Dividend — Government of Saskatchewan	3,800,000	3,932,595
Service Billed in Advance	544,689	459,072
	<u>\$ 9,863,083</u>	<u>\$ 7,805,161</u>

	<u>\$ 162,712,687</u>	<u>\$ 151,407,455</u>
--	-----------------------	-----------------------

STATEMENT OF INCOME

For the year ended December 31, 1966 (1965)

	1966	1965
OPERATING REVENUES		
Local Service	\$ 13,297,649	\$ 12,267,401
Rural Companies Connecting Fees	395,711	390,725
Toll Service	21,860,275	19,440,113
Miscellaneous	839,183	586,802
	<hr/>	<hr/>
Less: Provision for Uncollectible Accounts	\$ 36,392,818	\$ 32,685,041
	280,562	130,945
	<hr/>	<hr/>
TOTAL OPERATING REVENUES	\$ 36,112,256	\$ 32,554,096
	<hr/>	<hr/>
OPERATING EXPENSES		
Maintenance	\$ 5,476,801	\$ 4,910,547
Traffic	5,272,668	5,081,011
Commercial	1,750,716	1,641,342
Marketing	423,124	341,055
Depreciation	8,302,166	7,299,179
General Administration	1,783,912	1,559,282
Superannuation and Workmen's Compensation	518,805	493,385
Insurance	41,911	71,275
Other Operating Expenses	657,039	335,070
	<hr/>	<hr/>
TOTAL OPERATING EXPENSES (Note 2)	\$ 24,227,142	\$ 21,732,146
	<hr/>	<hr/>
NET OPERATING REVENUE	\$ 11,885,114	\$ 10,821,950
	<hr/>	<hr/>
ADD: OTHER INCOME		
Interest and Miscellaneous	\$ 225,550	\$ 279,408
Sinking Fund Earnings (Note 1)	1,272,804	1,127,555
	<hr/>	<hr/>
	\$ 1,498,354	\$ 1,406,963
	<hr/>	<hr/>
	\$ 13,383,468	\$ 12,228,913
	<hr/>	<hr/>
DEDUCT: FIXED CHARGES		
Grants in Lieu of Taxes	\$ 432,523	\$ 398,959
Interest and Exchange on Government Advances	5,989,809	5,521,465
Amortization of Discount on Government Advances		
Outstanding	117,053	113,245
Other Fixed Charges	12,828	12,649
	<hr/>	<hr/>
	\$ 6,552,213	\$ 6,046,318
	<hr/>	<hr/>
NET INCOME FOR THE YEAR	\$ 6,831,255	\$ 6,182,595
	<hr/>	<hr/>
Disposition of Net Income for the Year		
Dividend — Government of Saskatchewan	\$ 3,800,000	\$ 3,932,595
Earnings Retained for Capital Expenditures	3,031,255	2,250,000
	<hr/>	<hr/>
	\$ 6,831,255	\$ 6,182,595
	<hr/>	<hr/>

Note 2: Expenditures during 1966 for the Administration of the Department of Telephones in the amount of \$160,451 and Other Assistance to Rural Telephone Companies during the year amounting to \$73,055 are not included as they are reimbursable by grants from the Consolidated Fund of the Province.

STATEMENT OF SOURCE AND DISPOSITION OF FUNDS

	1966	1965
SOURCE OF FUNDS		
Operations:		
Net Income for the year	\$ 6,831,255	\$ 6,182,595
Add: Depreciation and other non-cash charges to income	8,689,137	7,654,930
Deduct: Sinking Fund earnings and other non-cash income	(1,342,697)	(1,239,472)
	<u>\$ 14,177,695</u>	<u>\$ 12,598,053</u>
Advances from Government of Saskatchewan		
Net Proceeds	7,401,000	11,051,784
Net recoveries from telephone property retired	1,933,693	3,482,134
Decrease in Working Capital	4,755,993
	<u>\$ 28,268,381</u>	<u>\$ 27,131,971</u>
DISPOSITION OF FUNDS		
Telephone Property Additions		
Gross Additions	\$ 20,054,286	\$ 17,218,315
Less: Interest charged construction	63,327	111,917
	<u>\$ 19,990,959</u>	<u>\$ 17,106,398</u>
Repayment of advance to Government of Saskatchewan		
Total repayment	\$ 1,192,459	\$ 1,229,368
Less: Portion repaid from Sinking Funds	423,840	297,191
	<u>\$ 768,619</u>	<u>\$ 932,177</u>
Sinking Fund contributions	3,708,803	3,438,804
Dividend — Government of Saskatchewan	3,800,000	3,932,595
Increase in Working Capital	1,721,997
	<u>\$ 28,268,381</u>	<u>\$ 27,131,971</u>

SCHEDULE OF TELEPHONE PROPERTY

	Total as at January 1, 1966	Additions for 1966	Retirements for 1966	Total as at December 31, 1966
Land	\$ 1,201,596	\$ 34,986	\$ 690	\$ 1,235,892
Buildings	18,828,357	1,187,587	44,045	19,971,899
Telephone Plant	133,312,531	16,537,291	4,207,866	145,641,956
Construction in Progress	607,615	1,470,770	2,078,385
Office Furniture & Fixtures	638,013	85,297	23,654	699,656
Mechanical Office Equipment	255,273	59,191	16,975	297,489
Tools & Work Equipment	1,049,653	431,865	184,248	1,297,270
Vehicles	1,121,975	247,299	180,248	1,189,026
	<u>\$ 157,015,013</u>	<u>\$ 20,054,286</u>	<u>\$ 4,657,726</u>	<u>\$ 172,411,573</u>

AUTOMATIC SERVICE

EXCHANGES CONVERTED TO DIAL OPERATION — 1966

*Calder	Kincaid	*Prelate
*Chaplin	Leask	Rocanville
Dinsmore	*Lemberg	*Sceptre
Elfros	Meota	*Southey
*Govan	*Milestone	St. Walburg
*Hague	Ogema	Willow Bunch
*Hanley	*Pennant	Windthorst
	Plato	

EXCHANGES SCHEDULED FOR DIAL OPERATION — 1967

*Aneroid	*Lashburn	*Punnichy
Bengough	*Lipton	*Raymore
*Churchbridge	*Marshall	Rose Valley
*Dalmeny	*Morse	*Spalding
*Fillmore	*Naicam	*Tribune
*Hafford	*Nokomis	*Turtleford
*Hepburn	Ormiston	*Waldheim

The exchanges above marked * are those in which DDD calls can originate.

DIRECT DISTANCE DIALING

EXCHANGES CONVERTED TO DIRECT DISTANCE DIALING—1966

(In addition to those marked * above)

Abbey	Ituna	Neville
Cabri	Langenburg	Ponteix
Esterhazy	Leader	Saltcoats
Foam Lake	Maple Creek	Swift Current
Gull Lake	Melville	Webb
Herbert	Neidpath	Yorkton
Hodgeville	Neudorf	

EXCHANGES SCHEDULED FOR DIRECT DISTANCE DIALING—1967

(In addition to those marked * above)

Alida	Hudson Bay	Prince Albert
Arborfield	Kinistino	Radville
Arcola	Lampman	Redvers
Battleford	Leask	St. Louis
Bienfait	Maidstone	St. Walburg
Birch Hills	Marsden	Shellbrook
Carlyle	Melfort	Star City
Carnduff	Meota	Storthoaks
Carrot River	Midale	Stoughton
Ceylon	Neilburg	Tisdale
Cut Knife	Nipawin	Unity
Domremy	North Battleford	Weyburn
Edam	Ogema	Wilkie
Estevan	Oxbow	Yellow Grass
		Zenon Park

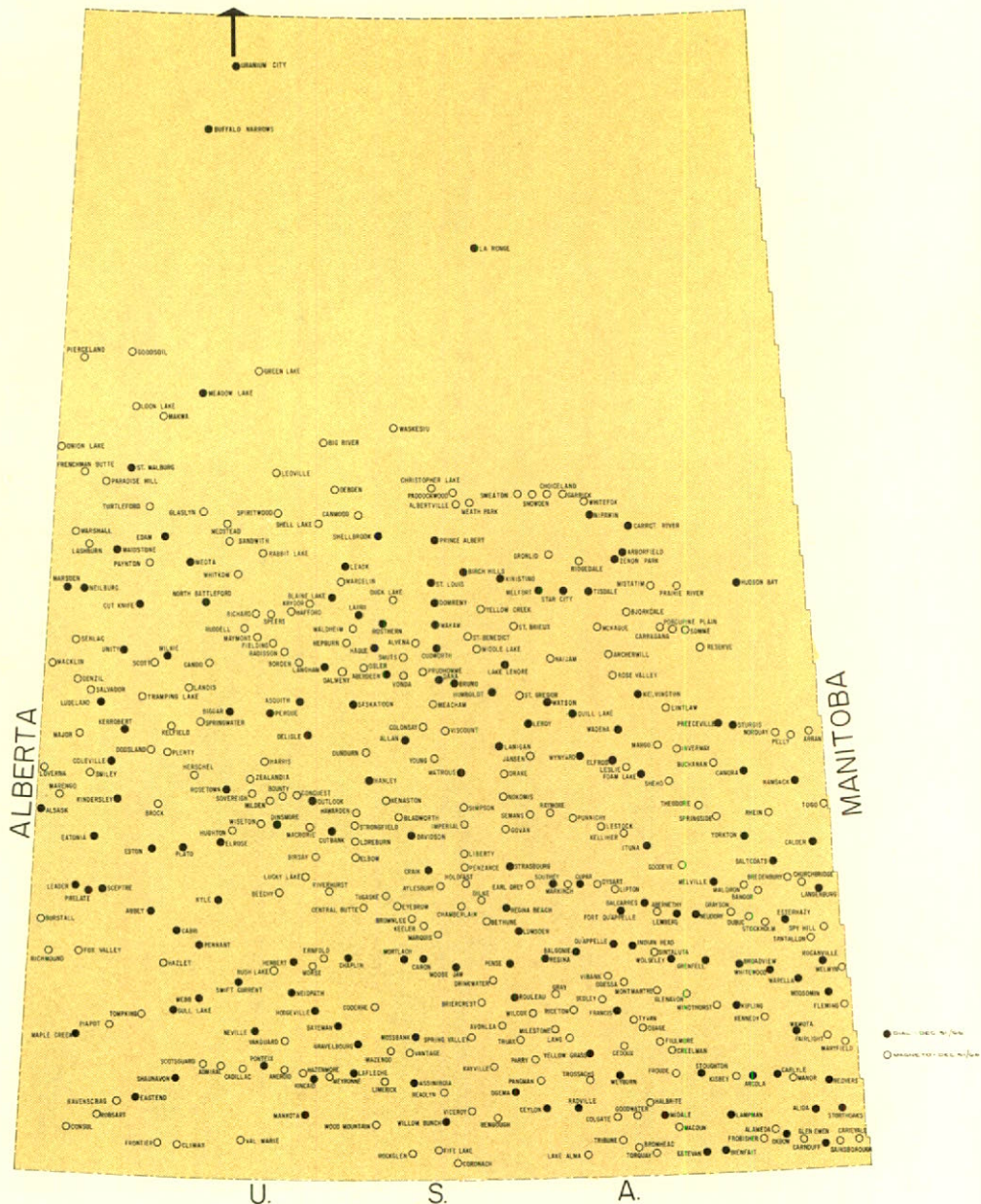
TELEPHONE EXCHANGES

MANUAL ○

DIAL ●

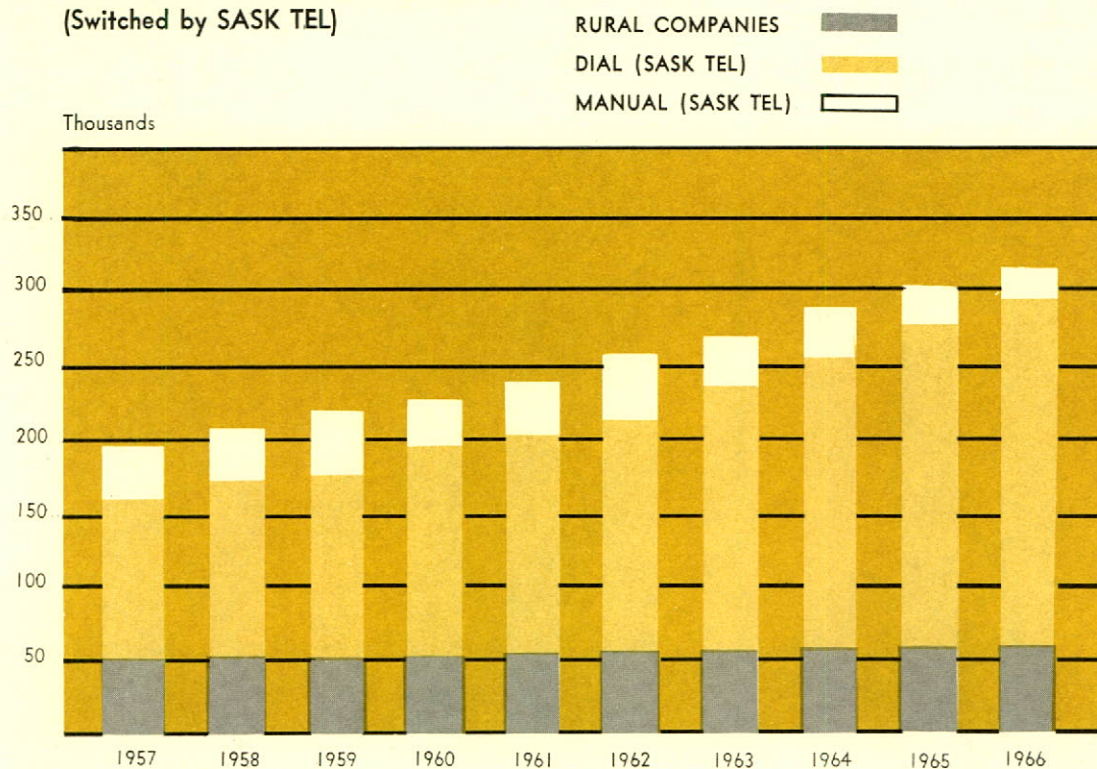


Testing routines help insure uninterrupted service between community dial offices and their toll centers.



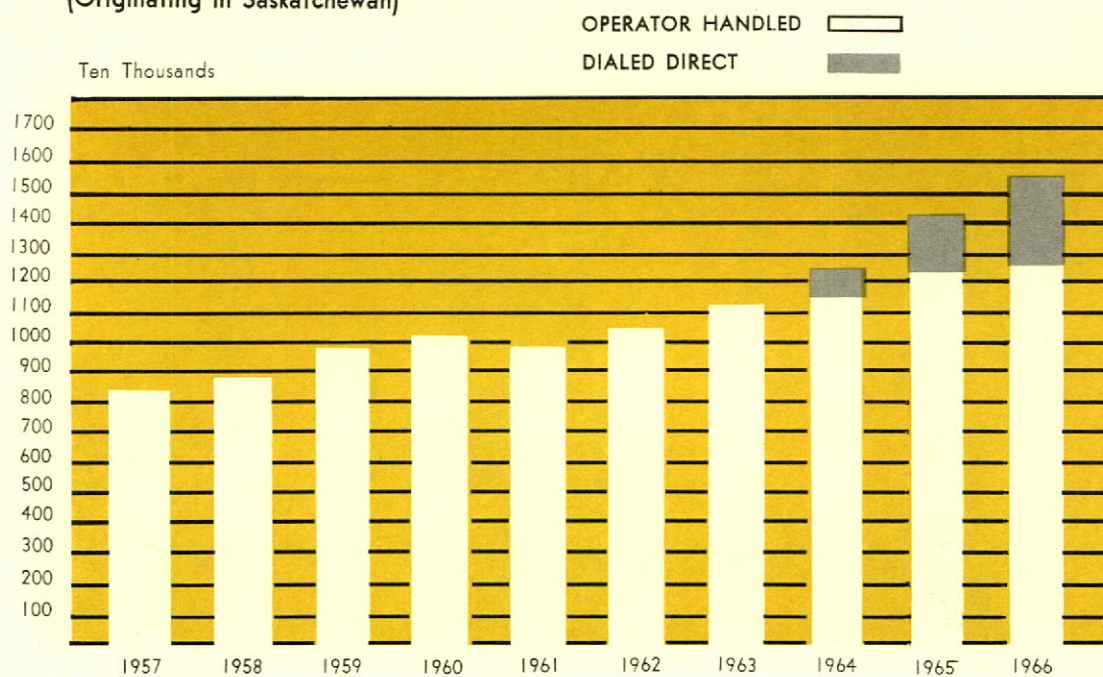
TELEPHONES IN SERVICE

(Switched by SASK TEL)



LONG DISTANCE MESSAGES

(Originating in Saskatchewan)



RADIO SYSTEMS

HEAVY ROUTE
MICROWAVE SYSTEMS



LIGHT ROUTE
MICROWAVE SYSTEMS
AND RADIO SYSTEMS



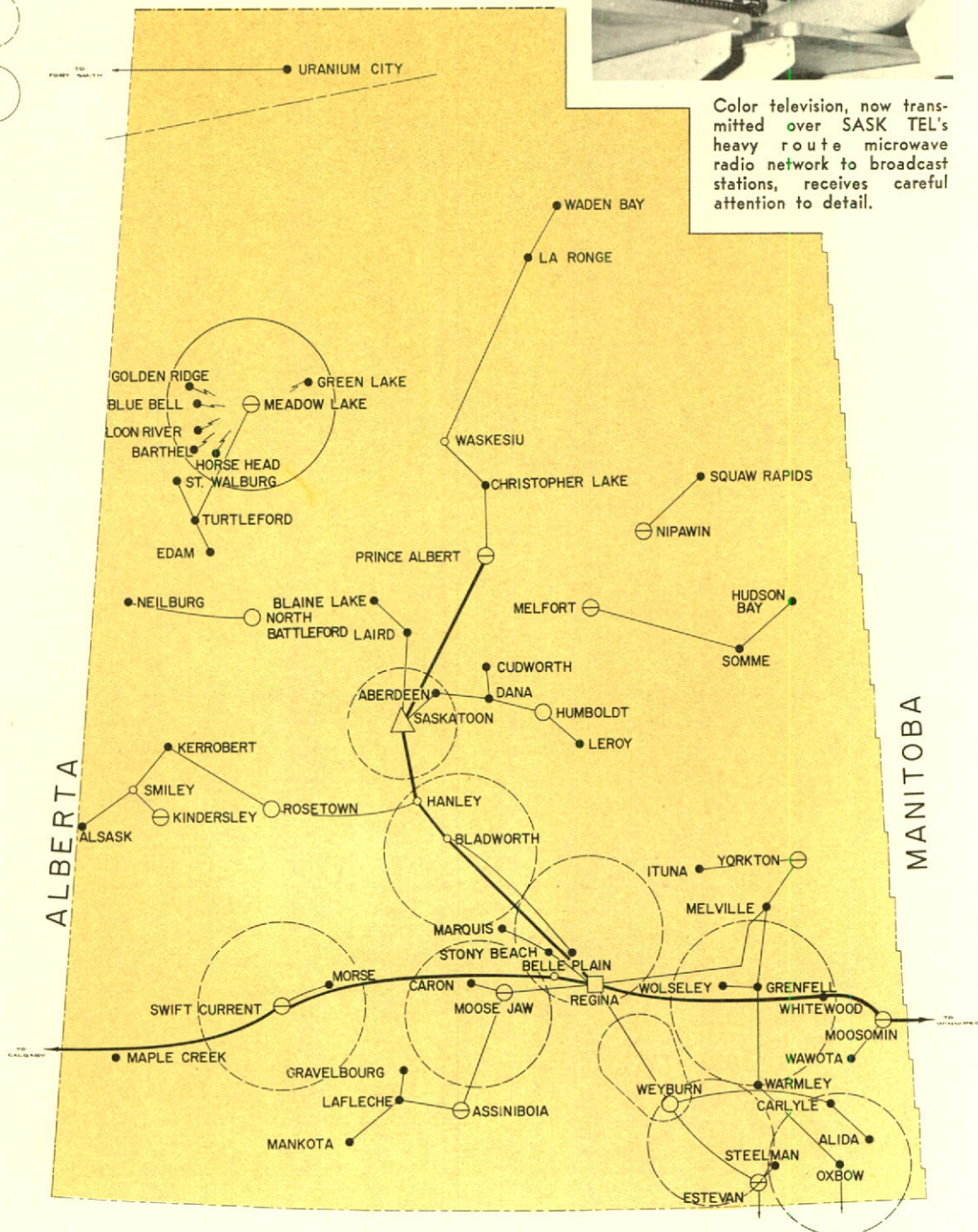
GENERAL MOBILE
TELEPHONE SERVICE



RADIO L.D. SERVICE



Color television, now transmitted over SASK TEL's heavy route microwave radio network to broadcast stations, receives careful attention to detail.



1956 - 1966

PROGRESS IN FIGURES

	1966	1965	1964	1963	1962	1956
NUMBER OF TELEPHONES						
SASK TEL Owned	265,765	247,876	230,289	215,225	202,861	135,561
Rural Company Owned (switched by SASK TEL)	53,231	52,787	52,553	52,333	52,302	50,600
Total	318,996	300,663	282,842	267,558	255,163	186,161
Percentage Dial (SASK TEL)	91.6%	90.4%	89.0%	86.4%	82.9%	78.2%
NUMBER OF SASK TEL OFFICES						
Exchanges	386	382	380	373	369	363
Toll Stations	57	74	83	98	104	162
Total	443	456	463	471	473	525
LONG DISTANCE MESSAGES						
Origin in Saskatchewan	15,448,091	14,181,524	12,535,951	11,299,498	10,584,138	8,399,420
Increase over previous year	8.9%	13.13%	10.94%	6.76%	6.06%	9.7%
FINANCE						
Telephone Property (at cost)	\$172,411,573	\$157,015,013	\$146,683,866	\$131,930,987	\$120,274,800	\$ 71,248,327
Total Revenue	37,891,172	34,092,004	30,195,765	27,063,063	24,534,782	14,277,869
Total Expense	31,059,917	27,909,409	25,480,174	22,904,792	20,863,810	11,512,233
Net Income	6,831,255	6,182,595	4,715,591	4,158,271	3,670,972	2,765,636
EMPLOYEES (at year end)						
Men	1,104	1,045	1,014	985	917	747
Women	1,308	1,265	1,167	1,114	1,037	1,153
Total	2,412	2,310	2,181	2,099	1,954	1,900
TOTAL PAYROLL	\$ 12,380,317	\$ 11,438,606	\$ 10,512,348	\$ 9,889,469	\$ 8,982,725	\$ 6,079,561



To emphasize SASK TEL's concern for public safety, the traditional dark green of telephone vehicles is about to give way to the gold and white and reflective blue markings of the vehicle shown above.

PRINTED BY
LAWRENCE AMON, PRINTER
TO THE QUEEN'S MOST
EXCELLENT MAJESTY



SASK TEL, part of
Trans-Canada Telephone System