

*latest in file*

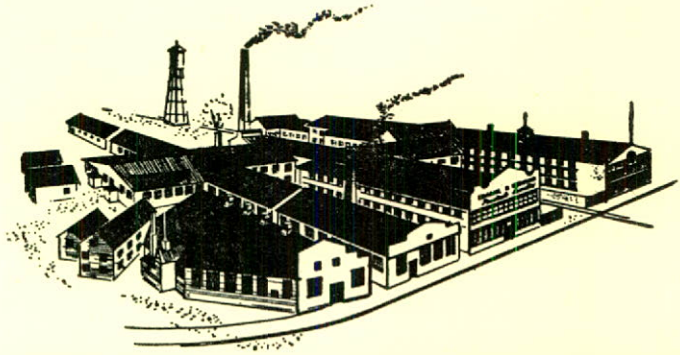
# 1958 ANNUAL REPORT



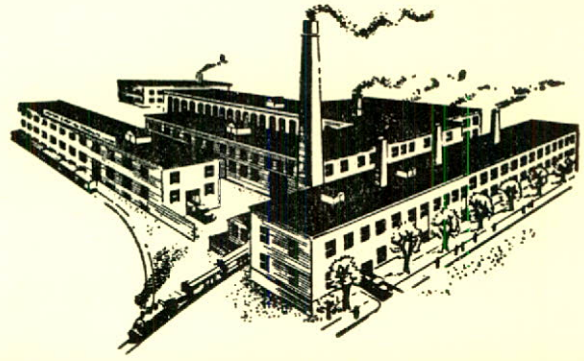
PURVIS HALL  
LIBRARIES  
MAR 28 1958  
MIDDLEBURY COLLEGE

**Fawcett**  
ENAMEL AND HEATING  
PRODUCTS LTD.

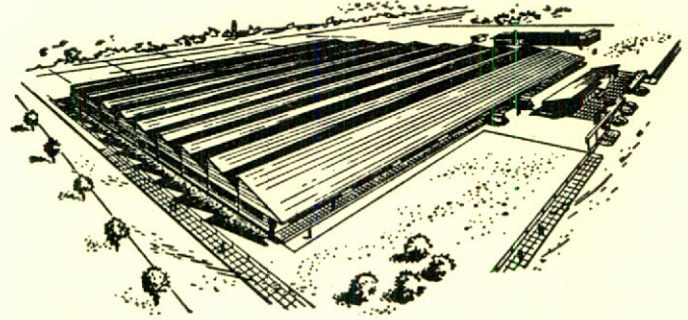




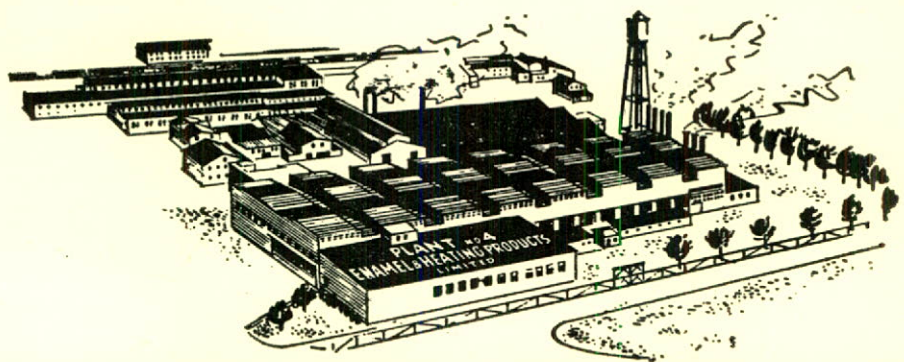
**GENERAL OFFICES AND PLANT No. 1, SACKVILLE, N. B.**



**PLANT No. 2, AMHERST, N. S.**



**AFFILIATED PLANT, JOHANNESBURG, SOUTH AFRICA**



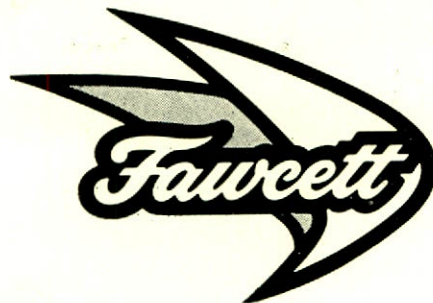
**PLANT No. 4 AND AIRCRAFT DIVISION, AMHERST, N. S.**



ANNUAL

REPORT

FOR THE YEAR ENDED DECEMBER 31ST 1958



**ENAMEL & HEATING PRODUCTS LIMITED**

ENAMEL & HEATING PRODUCTS LIMITED  
SACKVILLE, N. B.

**DIRECTORS**

N. A. Hesler

N. T. Avard  
A. R. French  
H. Goldstein  
H. G. Hesler

A. M. MacKay  
F. R. Rand  
W. J. Wienand, Jr.  
C. N. Wilson

**OFFICERS**

N. A. Hesler	President and General Manager
N. T. Avard	Vice-President
A. R. French	Vice-President, Assistant General Manager Secretary and Treasurer
F. R. Rand	Vice-President
W. J. Wienand, Jr.	Vice-President in charge of Aircraft Division
S. R. Donaldson	General Superintendent
A. M. Latta	General Sales Manager
H. G. Burnett	Advertising Manager
R. B. Fullerton	Assistant Treasurer

**AUDITORS**

Ross, Touche & Co.

**ADVERTISING AGENCY**

Imperial Advertising Limited,  
Halifax, N. S.

**TRANSFER AGENTS**

Montreal Trust Company Montreal, Que.	The Central Trust Co., of Canada Moncton, N. B. — Amherst, N. S.
--	---

**REGISTRARS**

Canadian Trust Company Montreal, Que.	The Central Trust Co., of Canada Moncton, N. B. — Amherst, N. S.
--	---



## *President's Report*

Sackville, N. B.  
February 28, 1959.

TO THE SHAREHOLDERS OF  
ENAMEL & HEATING PRODUCTS LIMITED

Your Board of Directors has pleasure in submitting herewith the Annual Report for the year ended December 31, 1958, together with a copy of the Auditors' Report.

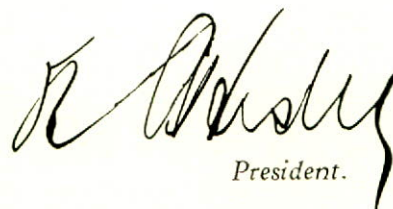
Net profits of the Company, after provision for normal depreciation in accordance with the Income Tax Regulations, and provision for Income Taxes, amounted to \$178,877.13 which has been credited to surplus.

The combined sales of this Company for the year 1958 show an increase of 11.9% over the previous year, but the profits reflect the intensive competition in our Stove and Heater Division as a result of American Imports, and the price of re-inforcing steel is seriously affected by low prices from European sources. We are continuously studying costs and methods in order to provide the most economical operations. All our plants and equipment are kept in excellent state of repair, and additional equipment has been provided to keep them modern.

We do not anticipate any large Capital Expenditures this year and a substantial reduction of inventories will be reflected in the Bank Loan.

We are happy to state that excellent labour relations continue to exist and wish to record our appreciation for the co-operation and understanding on the part of the Unions and for the excellent contribution made by the employees throughout the entire organization.

Respectfully submitted on behalf of the Board of Directors.



*R. Whistler*  
President.

# ENAMEL & HEATING

## Balance Sheet as at

(With comparative figures)

### ASSETS

	1958	1957
CURRENT:		
Cash .....	\$ 46,289.62	\$ 83,032.85
Accounts receivable — less reserve .....	1,278,640.87	938,029.99
Inventories — Raw materials, supplies, work in process and finished goods; physically taken and priced at the lower of cost or market value .....	2,243,881.76	2,021,306.93
	<u>\$3,568,812.25</u>	<u>\$3,042,369.77</u>
INVESTMENT SECURITIES AT COST .....	\$ 1,500.00	\$ 1,500.00
FIXED:		
Land .....	\$ 69,200.00	\$ 69,200.00
Buildings .....	2,281,184.70	2,256,403.16
Machinery and Equipment .....	1,610,518.58	1,479,949.93
Motor Vehicles .....	55,654.98	50,159.54
	<u>\$4,016,558.26</u>	<u>\$3,855,712.63</u>
As appraised by Canadian Appraisal Com- pany Limited under date of August 27, 1955, of Fixed Assets as of December 31, 1954, on basis of depreciated replacement value plus subsequent additions at cost, less disposals.		
DEFERRED DEBITS:		
Prepaid Insurance .....	\$ 10,992.49	\$ 6,191.10
Other .....	20,871.24	48,760.67
	<u>\$ 31,863.73</u>	<u>\$ 54,951.77</u>
	<u><u>\$7,618,734.24</u></u>	<u><u>\$6,954,534.17</u></u>

Signed on behalf of the Board:

N. A. HESLER, Director.

N. T. AVARD, Director.



# PRODUCTS, LIMITED

December 31, 1958

(as at December 31, 1957)

## LIABILITIES

CURRENT:	1958	1957
Bank loan — secured under Section 88 of the Bank Act .....	\$ 650,000.00	\$ 80,000.00
Bills and Accounts Payable .....	463,674.95	525,683.96
Accrued Liabilities .....	64,564.37	58,464.52
Accrued Debenture Interest .....	13,062.50	13,668.13
Provision for taxes on income .....	105,390.06	99,622.78
Dividends on capital stock payable Jan. 31, 1959 .....	17,700.00	17,700.00
	<u>\$1,314,391.88</u>	<u>\$ 795,139.39</u>
 FUNDED DEBT:		
4 $\frac{3}{4}$ % Sinking Fund Debentures, Series "A", due April 1, 1976:		
Authorized and issued .....	\$1,250,000.00	\$1,250,000.00
Less: Debentures purchased under Sinking Fund provisions and cancelled .....	150,000.00	99,000.00
	<u>\$1,100,000.00</u>	<u>\$1,151,000.00</u>
 ACCUMULATED DEPRECIATION:		
Buildings .....	396,310.68	385,346.13
Machinery and Equipment .....	800,446.70	737,340.91
Motor Vehicles .....	32,535.08	28,832.51
	<u>\$1,229,292.46</u>	<u>\$1,151,519.55</u>
 CAPITAL STOCK:		
Preferred Shares — 4% non-cumulative redeemable of \$2.50 par value:		
Authorized and Issued — 118,000 shares .....	295,000.00	295,000.00
Common shares of no par value		
Class "A":		
Authorized — 250,000 shares		
Issued — 118,000 shares .....	219,884.36	219,884.36
Class "B":		
Authorized — 250,000 shares		
Issued — 118,000 shares .....	219,884.35	219,884.35
	<u>\$ 734,768.71</u>	<u>\$ 734,768.71</u>
EARNED SURPLUS— <i>per statement attached</i>	\$ 991,490.04	\$ 863,155.82
Increase in value of fixed assets over deprec- iated cost in accordance with appraisal....	2,248,791.15	2,258,950.70
	<u>\$7,618,734.24</u>	<u>\$6,954,534.17</u>

Submitted with our accompanying  
report dated February 25, 1959.

ROSS, TOUCHE & Co.  
Chartered Accountants,  
Saint John, N. B.

**ENAMEL & HEATING PRODUCTS, LIMITED**

**STATEMENT OF PROFIT AND LOSS**

**FOR THE YEAR ENDED DECEMBER 31, 1958**

Profit from operations before deducting the following:		\$ 511,211.55
Depreciation .....	\$ 87,922.49	
Executive salaries .....	56,550.00	
Directors' fees and expenses .....	1,287.75	
Legal charges .....	303.15	
Debenture interest .....	54,471.73	200,535.12
		<hr/>
		\$ 310,676.43
Non-operating income .....		20,090.46
		<hr/>
		330,766.89
Provision for taxes on income .....		151,889.76
		<hr/>
Net income for the year .....		<u>\$ 178,877.13</u>

**STATEMENT OF EARNED SURPLUS**

Balance at credit — January 1, 1958.....		\$ 863,155.82
Add: Net income for the year — per statement of profit and loss .....	\$ 178,877.13	
Profit on debentures redeemed .....	7,637.50	
Profit on disposal fixed assets .....	1,366.76	187,881.39
		<hr/>
		1,051,037.21
Deduct:		
Adjustment of prior year income taxes ....	547.17	
Dividends on Capital Stock:		
4% preferred shares .....\$11,800.00		
Class "A" common shares 47,200.00	59,000.00	59,547.17
		<hr/>
Balance at credit December 31, 1958 .....		<u>\$ 991,490.04</u>



## *Auditors' Report*

TO THE SHAREHOLDERS  
ENAMEL & HEATING PRODUCTS, LIMITED,  
SACKVILLE, N. B.

We have examined the balance sheet of Enamel & Heating Products, Limited as at December 31, 1958 and the related statements of profit and loss and earned surplus for the year ended on that date and have obtained all the information and explanations we have required. Our examination included a general review of the accounting procedures and such tests of accounting records and other supporting evidence as we considered necessary in the circumstances.

In our opinion the accompanying balance sheet and the related statements of profit and loss and earned surplus are properly drawn up so as to exhibit a true and correct view of the state of affairs of the company as at December 31, 1958, and the results of its operations for the year ended on that date, according to the best of our information and the explanations given to us and as shown by the books of the company.

ROSS TOUCHE & CO.,  
Chartered Accountants.

Saint John, N. B.  
February 25, 1959.

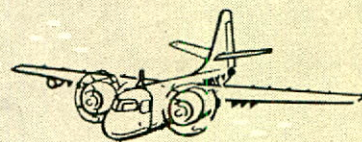


# SYMBOLS OF PROGRESS SINCE 1852

*Fawcett*



## IN THE AIR

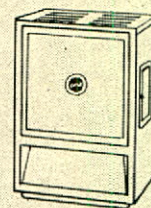


## AND IN CONSTRUCTION

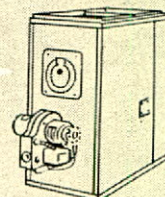
REINFORCING STEEL



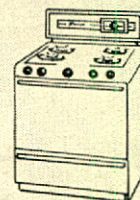
## IN ROOM HEATING



## IN HOME HEATING



## AND IN THE KITCHEN



Enamel & Heating Products Limited have served Canadian homes and industry for more than a century . . . meeting the twin demands of higher quality and lower cost.

# ENAMEL and HEATING PRODUCTS LIMITED

Sackville, N. B. ● Amherst ● Halifax ● Montreal ● Calgary ● Vancouver



**ENAMEL & HEATING PRODUCTS LIMITED**

